

ARMY  
NAVY  
AIR FORCE

TM 11-5820-863-23P-1  
EE150-DV-PLG-010/E110 FRC170, 171, 173  
TO 31R5-2FRC171-4

---

ORGANIZATIONAL AND DIRECT SUPPORT MAINTENANCE  
REPAIR PARTS AND SPECIAL TOOLS LIST  
FOR  
RADIO SETS

AN/FRC-171 (V)	(NSN 5820-01-108-9279)
AN/FRC-171 (V) 2	(NSN 5820-01-108-3684)
AN/ FRC-171 (V) 3	(NSN 5820-01-108-3685)
AN/FRC-171 (V)4	(NSN 5820-01-108-3686)
AN/FRC-171 (V) 5	(NSN 5820-01-108-3687)
AN/ FRC-171 (V) 6	(NSN 5820-01-108-3688)
AN/ FRC-171 (V)7	(NSN 5820-01-108-3689)
AN/FRC-171 (V)8	(NSN 5820-01-108-3690)
AN/FRC-171 (V)9	(NSN 5820-01-108-3691)
AN/FRC-171 (V) 10	(NSN 5820-01-108-3691)
AN/FRC-171 (V) 11	(NSN 5820-01-108-3693)
AN/FRC-171 (V) 12	(NSN 5820-01-108-5278)

---

DEPARTMENTS OF THE ARMY, THE NAVY, AND THE AIR FORCE

7 February, 1985

Technical Manual  
 No. 11-5820-863-23P-1  
 Technical Manual  
 EE150-DV-PLG010/E110 FRC170, 171, 173  
 Technical Order  
 TO 31R5-2FRC171-4



DEPARTMENTS OF THE ARMY,  
 THE NAVY AND THE AIR FORCE

*Washington, DC, 7 February. 1985*

**ORGANIZATIONAL AND DIRECT SUPPORT MAINTENANCE  
 REPAIR PARTS AND SPECIAL TOOLS LIST  
 FOR  
 RADIO SETS**

AN/FRC-171 (V)1	(NSN 5820-01-108-9279)
AN/FRC-171 (V)2	(NSN 5820-01-108-3684)
AN/FRC-171 (V)3	(NSN 5820-01-108-3685)
AN/FRC-171 (V)4	(NSN 5820-01-108-3686)
AN/FRC-171 (V)5	(NSN 5820-01-108-3687)
AN/FRC-171 (V)6	(NSN 5820-01-108-3688)
AN/FRC-171 (V)7	(NSN 5820-01-108-3689)
AN/FRC-171 (V)8	(NSN 5820-01-108-3690)
AN/FRC-171 (V)9	(NSN 5820-01-108-3691)
AN/FRC-171 (V)10	(NSN 5820-01-108-3692)
AN/FRC-171 (V)11	(NSN 5820-01-108-3693)
AN/FRC-171 (V)12	(NSN 5820-01-108-5278)

Current as of 1 May 1984

**REPORTING ERRORS AND RECOMMENDING IMPROVEMENTS**

You can help improve this manual. If you find any mistakes or if you know of a way to improve the procedures, please let us know. Mail your letter, DA Form 2028 (Recommended Changes to Publications and Blank Forms), or DA Form 2028-2 located in back of this manual direct to: Commander, US Army Communications-Electronics Command and Fort Monmouth, ATTN: DRSEL-ME-MP, Fort Monmouth, NJ 07703.

For Air Force, submit AFTO Form 22 (Technical Order System Publication Improvement Report and Reply) in accordance with paragraph 6-5, Section VI, T.O. 00-5-1. Forward direct to prime ALC/ MST.

For Navy, mail comments to the Commander, Naval Electronics Systems Command, ATTN: ELEX 8122, Washington, DC 20360.

In either case, a reply will be furnished direct to you.

## Table of Contents

	Page	Illus. Figure
Section I. Introduction.....	1	
II. Repair Parts List.....	5	
Group 00 Radio Set AN/FRC-171(V) .....	5	1
01 RF Assembly .....	7	2
0101 Cabinet Electrical Equipment CY-7857/FRC-1 71(V) (Return to vendor through depot facilities)		
0102 Transmitter Assembly-RF, 8 G Hz.....	9	3
0103 Receiver Assembly-RF, 8 GH.....	13	4
0104 Waveguide Assembly .....	17	5
010401 Attenuator Fixed (Return to vendor through depot facility)		
0105 TWT/8 GH .....	21	6
0106 TWT Power Supply PP-7608/FRC .....	23	7
0107 RF Cooling Fan (See next higher assembly)		
02 Radio Electronics Assembly.....	25	8
0201 Cabinet, Electrical Equipment CY-7852/FRC (Return to vendor through depot facility)		
0202 Modem, Digital Data, (MD-10( ) ( )/FRC) (Return to vendor through depot facility)		
0203 Multiplexer, Digital (TD- 13 ( ) ( )/FRC) (Return to vendor through depot facility)		
0204 Demultiplexer, Digital TD-1304/FRC (Return to vendor through depot facility)		
0205 Timing Module TD-1305/FRC (Return to vendor through depot facility)		
0206 Monitor Module ID-2230/FRC (Return to vendor through depot facility)		
0207 Switchover Logic Module SA-2296/FRC (Return to vendor through depot facility)		
0208 Filter, Intermediate Frequency Roofing (F-I ( ) ( )/FRC) (Return to vendor through depot facility)		
0209 Panel, Test Electrical TS-3855/FRC (Return to vendor through depot facility)		
0210 Electronics Cooling Fan Assembly .....	27	9
0211 Cables, IF.....	29	10
03 Power Supply (Same as Group 0106)		
04 Rack, Electrical Equipment Mt-6124/FRC (Return to vendor through facility)		
05 Cable Assemblies, RF, Interconnection.....	31	11
Section III. Special Tools List (Not applicable)		
IV. National Stock Number and Part Number Index.....	32	

**SECTION I  
INTRODUCTION**

**1. Scope**

This manual lists spares and repair parts; special tools; special test, measurement, and diagnostic equipment (TMDE), and other special support equipment required for performance of organizational, direct support, and general support maintenance of the AN/FRC-171(V) through (V)12. It authorizes the requisitioning and issue of spares and repair parts as indicated by the source and maintenance codes.

**2. General**

This Repair Parts and Special Tools List is divided into the following sections:

a. Section II. Repair Parts List. A list of spares and repair parts authorized for use in the performance of maintenance. The list also includes parts which must be removed for replacement of the authorized parts. Parts lists are composed of functional groups in numeric sequence, with the parts in each group listed in figure and item number sequence.

b. Section III: Special Tools List. Not applicable.

c. Section IV National Stock Number and Part Number Index A list, in National item identification number (NIIN) sequence, of all National stock numbers (NSN) appearing in the listings, followed by a list, in alphanumeric sequence, of all part numbers appearing in the listings. National stock numbers and part numbers are cross-referenced to each illustration figure and item number appearance.

**3. Explanation of Columns**

a. Illustration. This column is divided as follows:

(1) Figure number. Indicates the figure number of the illustration on which the item is shown.

(2) Item number. The number used to identify item called out in the illustration.

b. Source, Maintenance and Recoverability (SMR) Codes.

(1) Source code. Source codes indicate the manner of acquiring support items for maintenance, repair, or overhaul of end items. Source codes are entered in the first and second positions of the Uniform SMR Code format as follows:

Code	Definition
PA	Item procured and stocked for anticipated or known usage.
PB	Item procured and stocked for insurance purpose because essentiality dictates that a minimum quantity be available in the supply system.
PC	Item procured and stocked and which otherwise would be coded PA except that it is deteriorative in nature.

- PD - Support item, excluding support equipment, procured for initial issue or outfitting and stocked only for subsequent or additional initial issues or outfittings. Not subject to automatic replenishment.
- PE - Support Equipment procured and stocked for initial issue or outfitting to specified maintenance repair activities.
- PF - Support equipment which will not be stocked but which will be centrally procured on demand.
- PG - Item procured and stocked to provide for sustained support for the life of the equipment. It is applied to an item peculiar to the equipment which, because of probable discontinuance or shutdown of production facilities, would prove uneconomical to reproduce at a later time.
- KD - An item of a depot overhaul/repair kit and not purchased separately. Depot kit defined as a kit that provides items required at the time of overhaul or repair.
- KF - An item of a maintenance kit and not purchased separately. Maintenance kit defined as a kit that provides an item that can be replaced at organizational or intermediate levels of maintenance.
- KB - Item included in both a depot overhaul/repair kit and a maintenance kit.
- MO - Item to be manufactured or fabricated at organizational level.
- MF - Item to be manufactured or fabricated at the direct support maintenance level.
- MH - Item to be manufactured or fabricated at the general support maintenance level.
- MD - Item to be manufactured or fabricated at the depot maintenance level.
- AO - Item to be assembled at organizational level.
- AF - Item to be assembled at direct support maintenance level.
- AH - Item to be assembled at general support maintenance level.
- AD - Item to be assembled at depot maintenance level.
- XA - Item is not procured or stocked because the requirements for the item will result in the replacement of the next higher assembly.
- XB - Item is not procured or stocked. If not available through salvage, requisition.
- XC - Installation drawing, diagram, instruction sheet, field service drawing, that is identified by manufacturer's part number.
- XD - A support item that is not stocked. When required, item will be procured through normal supply channels.

## NOTE

Cannibalization or salvage may be used as a source of supply for any items source coded above except those coded XA and aircraft items as restricted by AR 750-1.

(2) Maintenance code. Maintenance codes are assigned to indicate the levels of maintenance authorized to USE and REPAIR support items. The maintenance codes are entered in the third and fourth positions of the Uniform SMR Code format as follows:

(a) The maintenance code entered in the third position will indicate the lowest maintenance level authorized to remove, replace, and use the support item. The maintenance code entered in the fourth position will indicate one of the following levels of maintenance:

Code	Application/Explanation
C	Crew or operator maintenance performed within organizational maintenance.
O	Support item is removed, replaced, used at the organizational level.
F	Support item is removed, replaced, used at the direct support level.
H	Support item is removed, replaced, used at the general support level.
D	Support items that are removed, replaced, used at depot, mobile depot, specialized repair activity only.

(b) The maintenance code entered in the fourth position indicates whether the item is to be repaired and identifies the lowest maintenance level with the capability to perform complete repair (i.e., all authorized maintenance functions). This positions will contain one of the following maintenance codes:

Code	Application/Explanation
O	The lowest maintenance level capable of complete repair of the support item is the organizational level.
F	The lowest maintenance level capable of complete repair of the support item is the direct support level.
H	The lowest maintenance level capable of complete repair of the support item is the general support level.
D	The lowest maintenance level capable of complete repair of the support item is the depot level.
L	Repair restricted to designated specialized repair activity.
Z	-Nonreparable. No repair is authorized.
B	- No repair is authorized. The item may be reconditioned by adjusting, lubricating, etc., at the user level. No parts or special tools are procured for the maintenance of this item.

(3) Recoverability code. Recoverability codes are assigned to support items to indicate the disposition action on unserviceable items. The recoverability code is entered in the fifth position of the Uniform SMR Code format as follows:

codes	Definition
Z	- Nonreparable item. When unserviceable, condemn and dispose at the level indicated in I position 3.
O	- Reparable item. When uneconomically repairable, condemn and dispose at organizational level.
F	- Reparable item. When uneconomically repairable, condemn and dispose at the direct support level.
H	- Reparable item. When uneconomically repairable, condemn and dispose at the general support level.
D	- Reparable item. When beyond lower level repair capability, return to depot. Condemnation and disposal not authorized below depot level.
L	- Reparable item. Repair, condemnation, and disposal not authorized below depot/specialized repair activity level.
A	- Item requires special handling or condemnation procedures because of specific reasons (i.e., precious metal content, high dollar value, critical material or hazardous material). Refer to appropriate manuals/directives for specific instructions.

c. National Stock Number. Indicates the National stock number assigned to the item and will be used for requisitioning purposes.

d. Federal Supply Code for Manufacturer (FSCM). The FSCM is a 5Sdigit numeric code listed in SB 708-41/42 which is used to identify the manufacturer, distributor, or Government agency, etc.

e. Part Number. Indicates the primary number used by the manufacturer(individual, company, firm, corporation, or Government activity), which controls the design and characteristics of the item by means of its engineering drawings, specifications, standards, and inspection requirements to identify an item or range of items.

## NOTE

When a stock numbered item is requisitioned, the repair part received may have a different part number than the part being replaced.

f. Description. Indicates the Federal item name and, if required, a minimum description to identify the item.

g. Unit of Measure (U/M). Indicates the standard of the basic quantity of the listed item as used in performing the actual maintenance function. This measure is expressed by a two-character alphabetical abbreviation (e.g., ea, in, pr, etc.). When the unit of measure differs from the unit of issue, the lowest unit of issue that will satisfy the required units of measure will be requisitioned

h. Quantity Incorporated in Unit. Indicates the quantity of the item used in the breakout shown on the illustration figure, which is prepared for a functional group, subfunctional group, or an assembly.

**6. Abbreviations**

Not applicable.

(Next printed page is 4.1)

**4. Special Information**

a. Usable on codes are shown in the description column. Uncoded items are applicable to all models. Identification of the usable on codes used in this publication are:

Code	Used on
DYX	AN/FRC-171(V)11
DY1	AN/FRC-171(V)3
DY2	AN/FRC-171(V)4
DY3	AN/FRC-171(V)5
DY6	AN/FRC-171(V)8
DY8	AN/FRC-171(V)10
DZA	AN/FRC-171(V)12

b. The following publication pertains to the AN/FRC-171(V)1 through AN/FRC-171(V)12 and their components:

TM 11-5820-863-13, Radio Sets AN/FRC-170(V)1 through 11, AN/FRC-171(V)1 through 12, and AN/FRC-173(V)1 through 12.

c. National stock numbers (NSN's) that are missing from P source coded items have been applied for and will be added to this TM by future change/revision when they are entered in the Army Master Data File (AMDF). Until the NSN's are established and published, submit exception requisitions to: Commander, US Army Communications-Electronics Command and Fort Monmouth, ATTN: DRSEL- MM, Fort Monmouth, New Jersey 07703 for the part required to support your equipment.

**5. How to Locate Repair Parts**

a. When National stock number or part number is unknown

(1) First Using the table of contents, determine the functional group within which the item belongs. This is necessary since illustrations are prepared for functional groups and listings are divided into the same groups.

(2) Second. Find the illustration covering the functional group to which the item belongs.

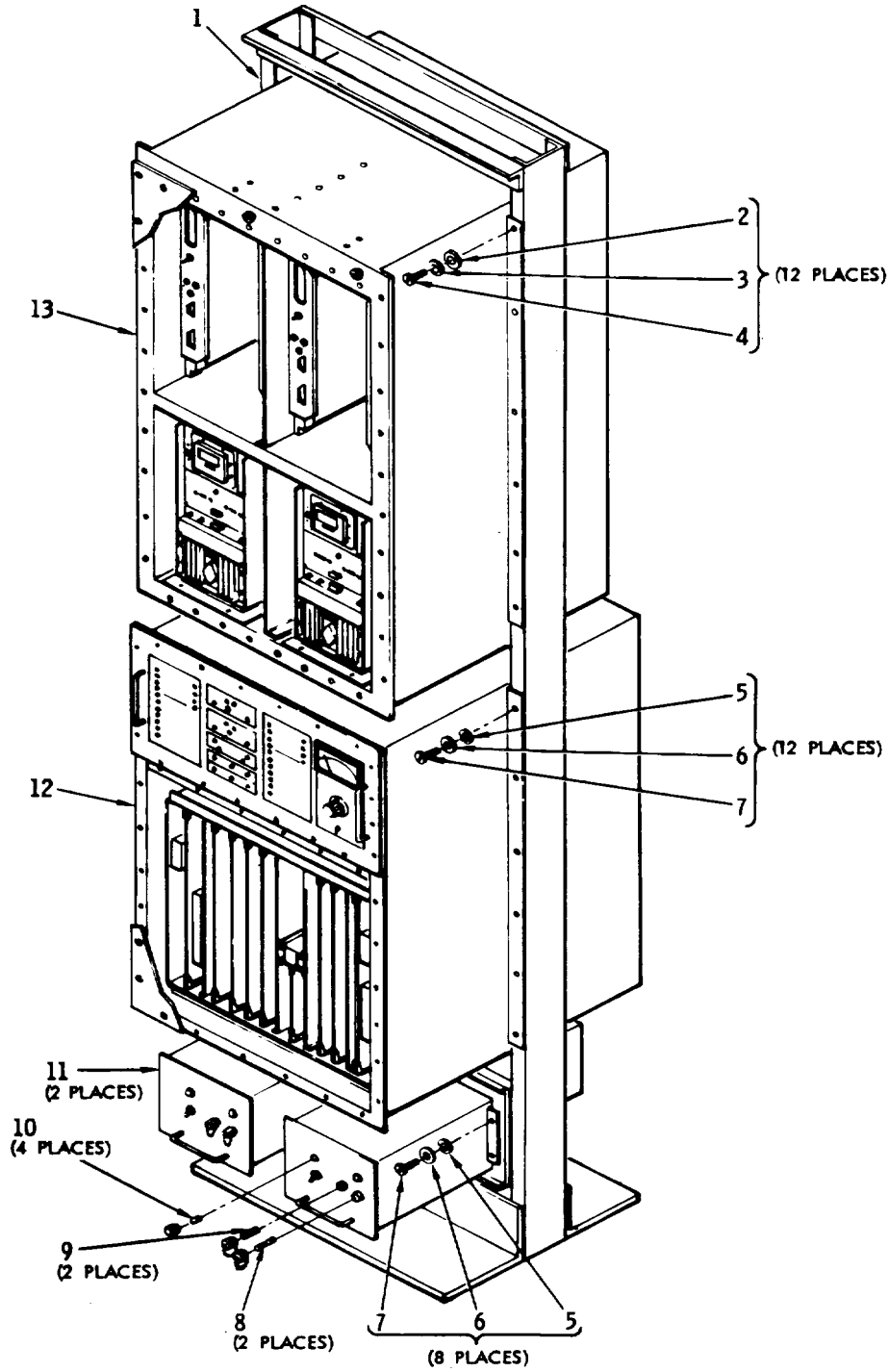
(3) Third. Identify the item on the illustration and note the illustration figure and item number of the item.

(4) Fourth. Using the Repair Parts Listing, find the figure and item number noted on the illustration.

b. When National stock number or part number is known.

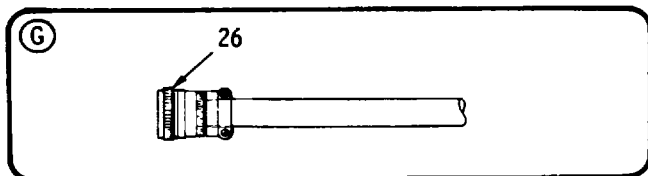
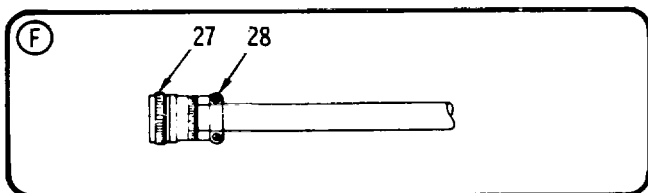
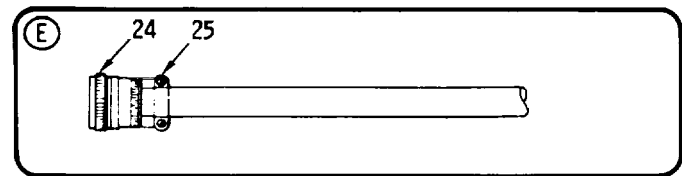
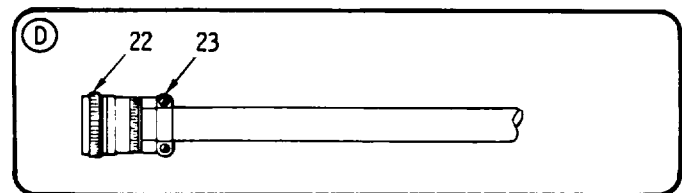
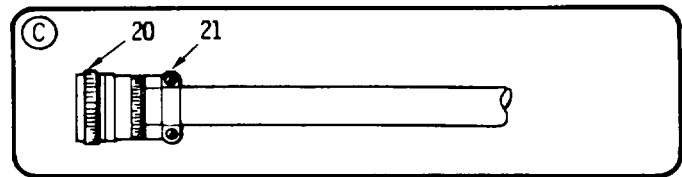
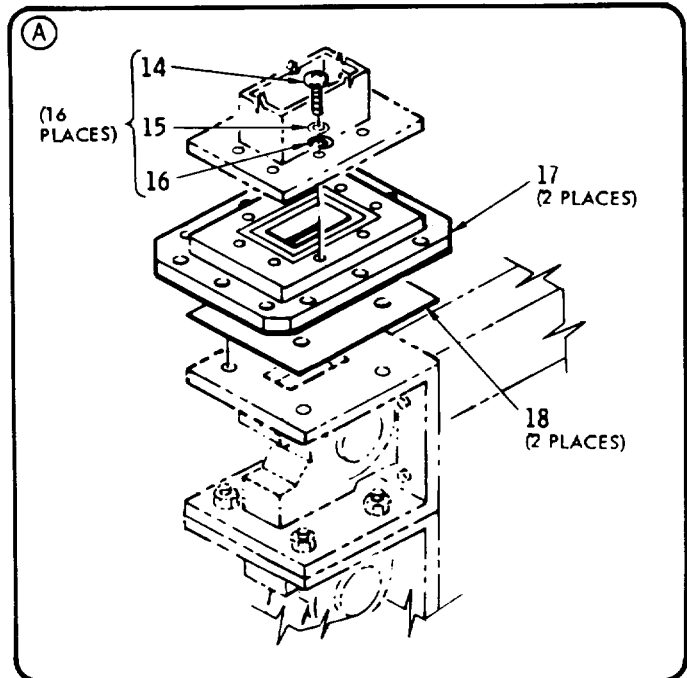
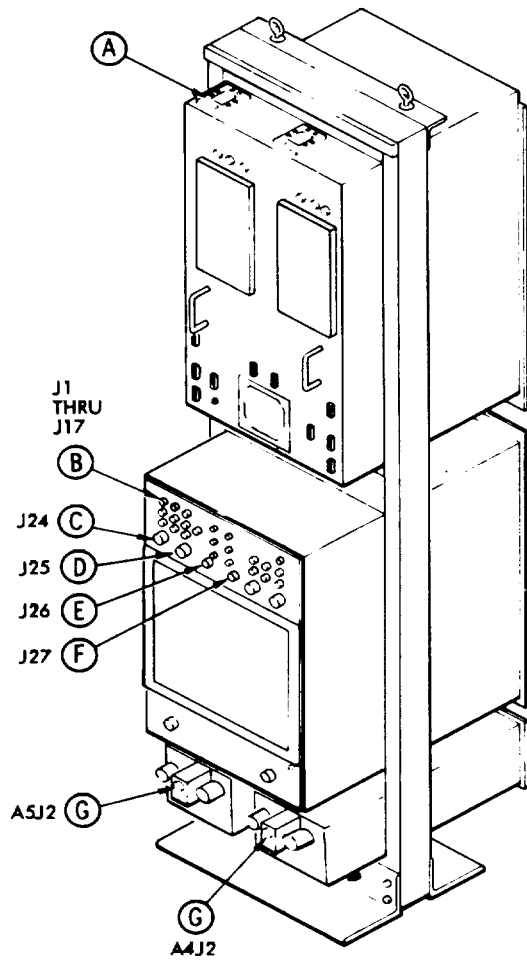
(1) First. Using the Index of National Stock Numbers and Part Numbers, find the pertinent National stock number or part number. This index is in NIIN sequence followed by a list of part numbers in alphanumeric sequence, cross-referenced to the illustration figure number and item number.

(2) Second. After finding the figure and item number, locate the figure and item number in the repair parts list.



EL8CX011

Figure 1. Radio Set AN/FRC-171(V)  
(Sheet 1 of 2)



NOTE: THESE ITEMS COMPRISE THE INSTALLATION KIT, WHICH IS NOT PART OF RADIO SET AN/FRC-171(V).

EL8CX012

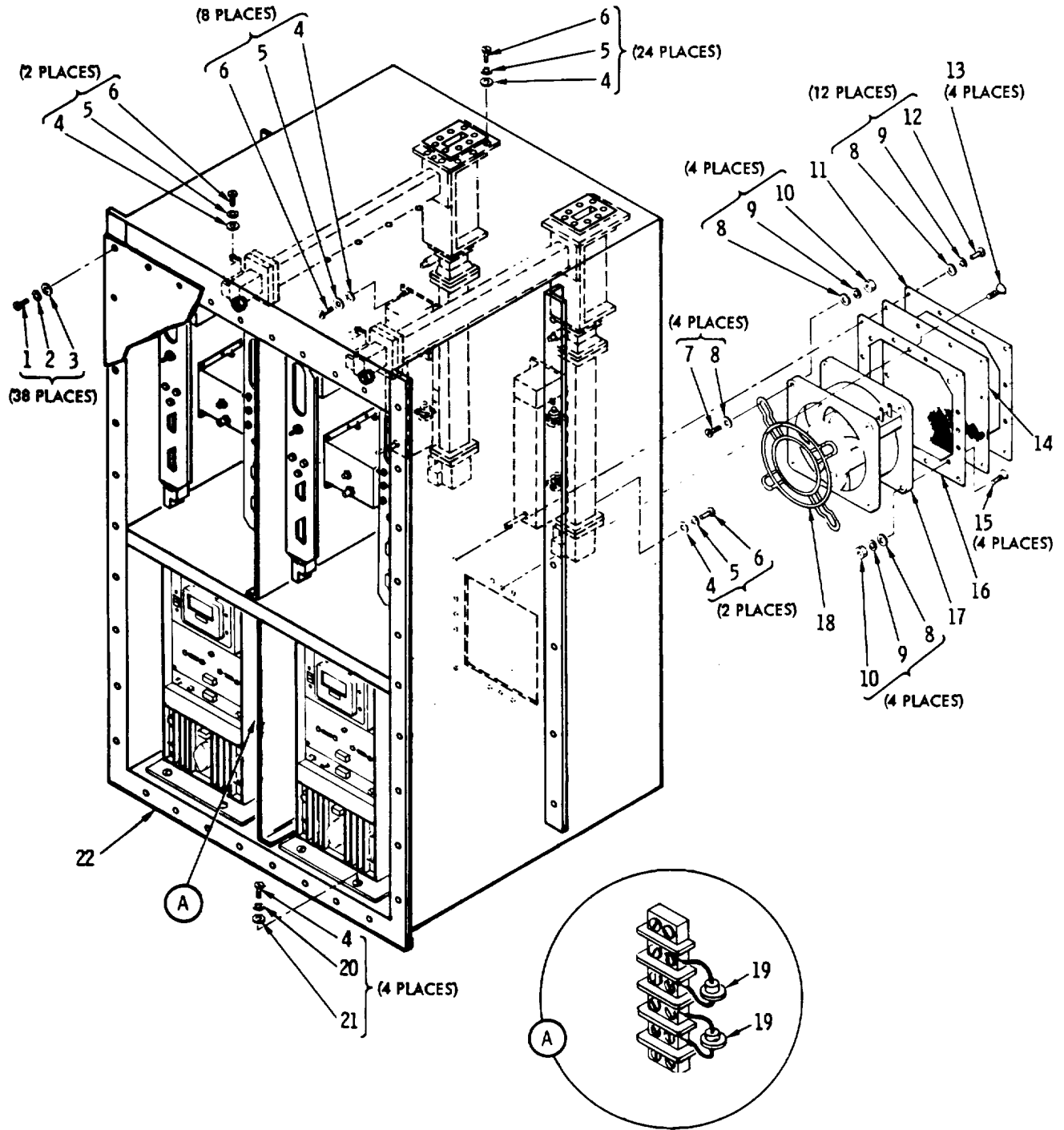
Figure 1. Radio Set AN/FRC-171(V)  
(Sheet 2 of 2)



SECTION II

TM 11-5820-863-23P-1/EE150-DV-PLG-010/E110 FRC170, 171, 173/TO 31R5-2FRC171-4

(1) ILLUSTRATION		(2)	(3)	(4)	(5)	(6)	(7)	(8)
(a) FIG NO.	(b) ITEM NO.	SMR CODE	NATIONAL STOCK NUMBER	FSCM	PART NUMBER	DESCRIPTION  USABLE ON CODE	U/M	QTY INC IN UNIT
						GROUP 00 RADIO SET AN/FRC-111(V)		
						RADIO SET SUBASSY.....DYX,DY1,DY2,DY3,DY6,DYB,DZA	EA	1
1	1	XBFFF		11982	511130	RACK,ELECTRICAL EQU .....DYX,DY1,DY2,DY3,DY6,DYB,DZA	EA	1
1	2	PAFDD	5820-01-126-9744	80058	MT6124FRC	WASHER,LOCK .....DYX,DY1,DY2,DY3,DY6,DYB,DZA	EA	12
1	3	XDFZZ	5310-00-820-6653	96906	MS35338-50	WASHER,FLAT .....DYX,DY1,DY2,DY3,DY6,DYB,DZA	EA	12
1	4	PAFZZ	5310-00-550-5054	96906	MS15795-809	SCREW,MACHINE .....DYX,DY1,DY2,DY3,DY6,DYB,DZA	EA	12
1	5	XBFZZ		78189	12-24	WASHER,LOCK .....DYX,DY1,DY2,DY3,DY6,DYB,DZA	EA	24
1	6	PAFZZ	5310-00-820-6653	96906	MS35338-50	WASHER,FLAT .....DYX,DY1,DY2,DY3,DY6,DYB,DZA	EA	24
1	7	XBFZZ	5310-00-550-5054	96906	MS15795-809	SCREW,MACHINE .....DYX,DY1,DY2,DY3,DY6,DYB,DZA	EA	32
1	8	PAOZZ	5920-00-849-6476	81349	F03B250OV1AS	FUSE,CARTRIDGE .....DYX,DY1,DY2,DY3,DY6,DYB,DZA	EA	1
1	9	PAOZZ	5920-00-177-2148	71400	MDA15A	FUSE,CARTRIDGE .....DYX,DY1,DY2,DY3,DY6,DYB,DZA	EA	1
1	10	PAOZZ	6240-00-045-4588	96906	MS18235-3CN	LAMP,CARTRIDGE .....DYX,DY1,DY2,DY3,DY6,DYB,DZA	EA	2
1	11	PAODD	5895-01-110-9596	80058	PP7611FRC	POWER SUPPLY .....DYX,DY1,DY2,DY3,DY6,DYB,DZA	EA	2
1	12	XCODD		11982	511200	RADIO ELECT ASSY .....DYX,DY1,DY2,DY3,DY6,DYB,DZA	EA	1
1	13	XBFFF		11982	C511310	RF ASSY,RAOIO SET .....DYX,DY1,DY2,DY3,DY6,DYB,DZA	EA	1
1	14	PAFZZ	5305-00-273-4022	80205	NAS1352C08-7	SCREW,CAP,SOCKET HE .....DYX,DY1,DY2,DY3,DY6,DYB,DZA	EA	16
1	15	PAFZZ	5310-00-069-5291	80205	NAS620C8	WASHER,FLAT .....DYX,DY1,DY2,DY3,DY6,DYB,DZA	EA	16
1	16	PAFZZ	5310-00-933-8119	96906	MS35338-137	WASHER,LOCK .....DYX,DY1,DY2,DY3,DY6,DYB,DZA	EA	16
1	17	PAFZZ	5985-01-046-9369	81349	M3922/52-041	FLANGE,WAVEGUIDE .....DYX,DY1,DY2,DY3,DY6,DYB,DZA	EA	2
1	18	PAFZZ		28817	23-02001876	SHIELDING,GASKET,EL.....DYX,DY1,DY2,DY3,DY6,DYB,DZA	EA	2
1	19	PAFZZ	5935-00-451-0824	00779	332225	CONNECTOR,PLUG,ELEC.....DYX,DY1,DY2,DY3,DY6,DYB,DZA	EA	17
1	20	PAFZZ	5935-00-728-6769	96906	MS3476L22-55S	CONNECTOR,PLUG,ELEC.....DYX,DY1,DY2,DY3,DY6,DYB,DZA	EA	1
1	21	PAFZZ	5935-01-310-6222	96906	MS3417-22N	CLAMP,CABLE,ELECTRI.....DYX,DY1,DY2,DY3,DY6,DYB,DZA	EA	1
1	22	PAFZZ	5935-00-009-3157	96906	MS3476L20-41S	CONNECTUR,PLUG,ELEC.....DYX,DY1,DY2,DY3,DY6,DYB,DZA	EA	1
1	23	PAFZZ	5935-01-012-4000	96906	MS3417-20N	ADAPTER,CABLE CLAMP.....DYX,DY1,DY2,DY3,DY6,DYB,DZA	EA	1
1	24	PAFZZ	5935-00-172-1008	96906	MS3476L16-26S	CONNECTOR,PLUG,ELEC.....DYX,DY1,DY2,DY3,DY6,DYB,DZA	EA	1
1	25	PAFZZ	5935-00-528-9302	96906	MS3417-16N	CLAMP,CABLE,ELECTRI.....DYX,DY1,DY2,DY3,DY6,DYB,DZA	EA	1
1	26	PAFZZ	5935-00-410-0194	96906	MS3476L14-5S	CONNECTOR,PLUG,ELEC.....DYX,DY1,DY2,DY3,DY6,DYB,DZA	EA	2
1	27	PAFZZ	5935-00-496-7838	96906	MS3476L14-19S	CONNECTUR,PLUG,ELEC.....DYX,DY1,DY2,DY3,DY6,DYB,DZA	EA	1
1	28	PAFZZ	5935-00-622-2723	96906	MS3417-14N	CLAMP,CABLE,ELECTRI.....DYX,DY1,DY2,DY3,DY6,DYB,DZA	EA	3
					<b>5</b>			



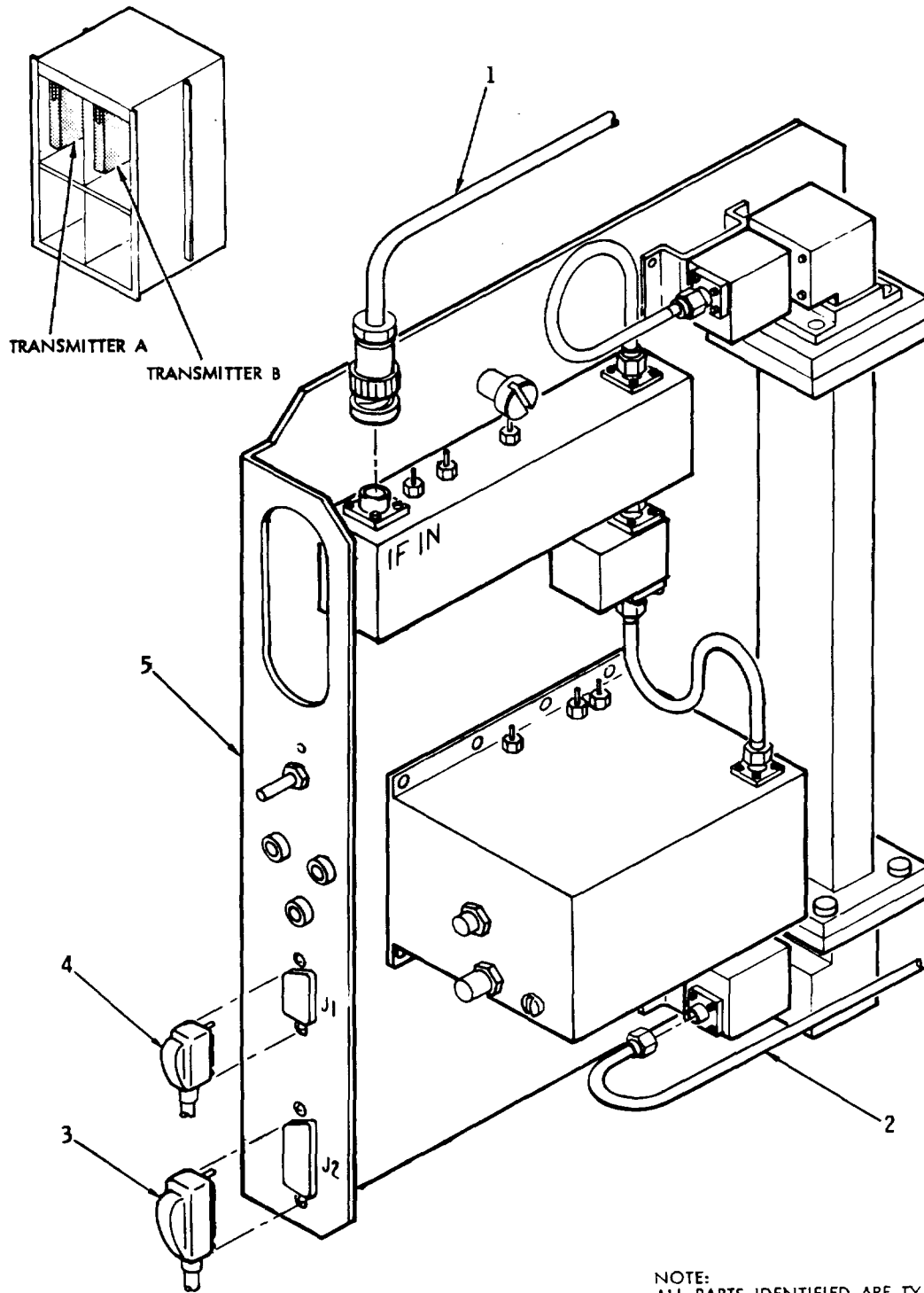
EL8CX013

Figure 2. RF Assembly

SECTION II

TM 11-5820-863-23P-1/EE150-DV-PLG-010/E110 FRC170, 171, 173/TO 31R5-2FRC171-4

(1) ILLUSTRATION		(2)	(3)	(4)	(5)	(6)	(7)	(8)
(a) FIG NO.	(b) ITEM NO.	SMR CODE	NATIONAL STOCK NUMBER	FSCM	PART NUMBER	DESCRIPTION  USABLE ON CODE	U/M	QTY INC IN UNIT
						GROUP 01 RF ASSEMBLY		
2	1	PAFZZ	5305-00-054-6653	96906	MS51957-29	SCREW,MACHINE .....DYX,DY1,DY2,DY3,DY6,DYB,DZA	EA	38
2	2	PAFZZ	5310-00-973-8660	80063	SM-B-416109-1	WASHER,FLAT .....DYX,DY1,DY2,DY3,DY6,DYB,DZA	EA	38
2	3	PAFZZ	5310-00-929-6395	96906	MS35338-136	WASHER,LOCK .....DYX,DY1,DY2,DY3,DY6,DYB,DZA	EA	38
2	4	PAFZZ	5310-00-880-5978	96906	MS15795-807	WASHER,FLAT .....DYX,DY1,DY2,DY3,DY6,DYB,DZA	EA	80
2	5	PAFZZ	5310-00-933-8119	96906	MS35338-137	WASHER,LOCK .....DYX,DY1,DY2,DY3,DY6,DYB,DZA	EA	8
2	6	PAFZZ	5305-00-054-6669	96906	MS51957-44	SCREW,MACHINE .....DYX,DY1,DY2,DY3,DY6,DYB,DZA	EA	48
2	7	PAFZZ	5305-00-054-6657	96906	MS51957-33	SCREW,MACHINE .....DYX,DY1,DY2,DY3,DY6,DYB,DZA	EA	4
2	8	PAFZZ	5310-00-973-8660	80063	SM-B-416109-1	WASHER,FLAT .....DYX,DY1,DY2,DY3,DY6,DYB,DZA	EA	28
2	9	PAFZZ	5310-00-929-6395	96906	MS35338-136	WASHER,LOCK .....DYX,DY1,DY2,DY3,DY6,DYB,DZA	EA	38
2	10	PAFZZ	5310-00-934-9761	96906	MS35649-264	NUT,PLAIN,HEXAGON .....DYX,DY1,DY2,DY3,DY6,DYB,DZA	EA	22
2	11	XBFZZ		21847	511359-1	MTG PLATE,FAN.....DYX,DY1,DY2,DY3,DY6,DYB,DZA	EA	1
Z	12	PAFZZ	5305-00-411-0683	96906	MS51957-123	SCREW,MACHINE .....DYX,DY1,DY2,DY3,DY6,DYB,DZA	EA	12
2	13	XDFZZ	5305-01-052-3304	96906	MS24693-25	SCREW,MACHINE .....DYX,DY1,DY2,DY3,DY6,DYB,DZA	EA	4
2	14	XBFZZ		21847	511357	FILTER,AIR .....DYX,DY1,DY2,DY3,DY6,DYB,DZA	EA	1
2	15	PAFZZ	5305-00-808-7832	96906	MS24693S29	SCREW,MACHINE .....DYX,DY1,DY2,DY3,DY6,DYB,DZA	EA	12
2	16	XBFZZ		21847	511359-2	MTG PLATE,FAN.....DYX,DY1,DY2,DY3,DY6,DYB,DZA	EA	1
2	17	PAFZZ	4140-01-101-2422	23936	4148X	FAN,TUBEAXIAL .....DYX,DY1,DY2,DY3,DY6,DYB,DZA	EA	1
2	18	XBFZZ		82877	55048	GUARD,FINGER.....DYX,DY1,DY2,DY3,DY6,DYB,DZA	EA	1
2	19	PAFZZ	5961-01-029-4558	04713	MR752	SEMICONDUCTOR DEVIC.....DYX,DY1,DY2,DY3,DY6,DYB,DZA	EA	2
2	20	PAFZZ	5310-00-933-8119	96906	MS35338-137	WASHER,LOCK .....DYX,DY1,DY2,DY3,DY6,DYB,DZA	EA	68
2	21	PAFZZ	5310-00-934-9759	96906	MS35649-284	NUT,PLAIN,HEXAGON .....DYX,DY1,DY2,DY3,DY6,DYB,DZA	EA	64
2	22	PAFDD	5820-01-120-3351	80058	CY7857/FRC171 (LV)	CABINET,ELECTRICAL .....DYX,DY1,DY2,DY3,DY6,DYB,DZA	EA	1



NOTE:  
ALL PARTS IDENTIFIED ARE TYPICAL  
FOR BOTH TRANSMITTER ASSEMBLIES

EL8CX01

Figure 3. Transmitter Assembly - RF, 8 GHz

SECTION II

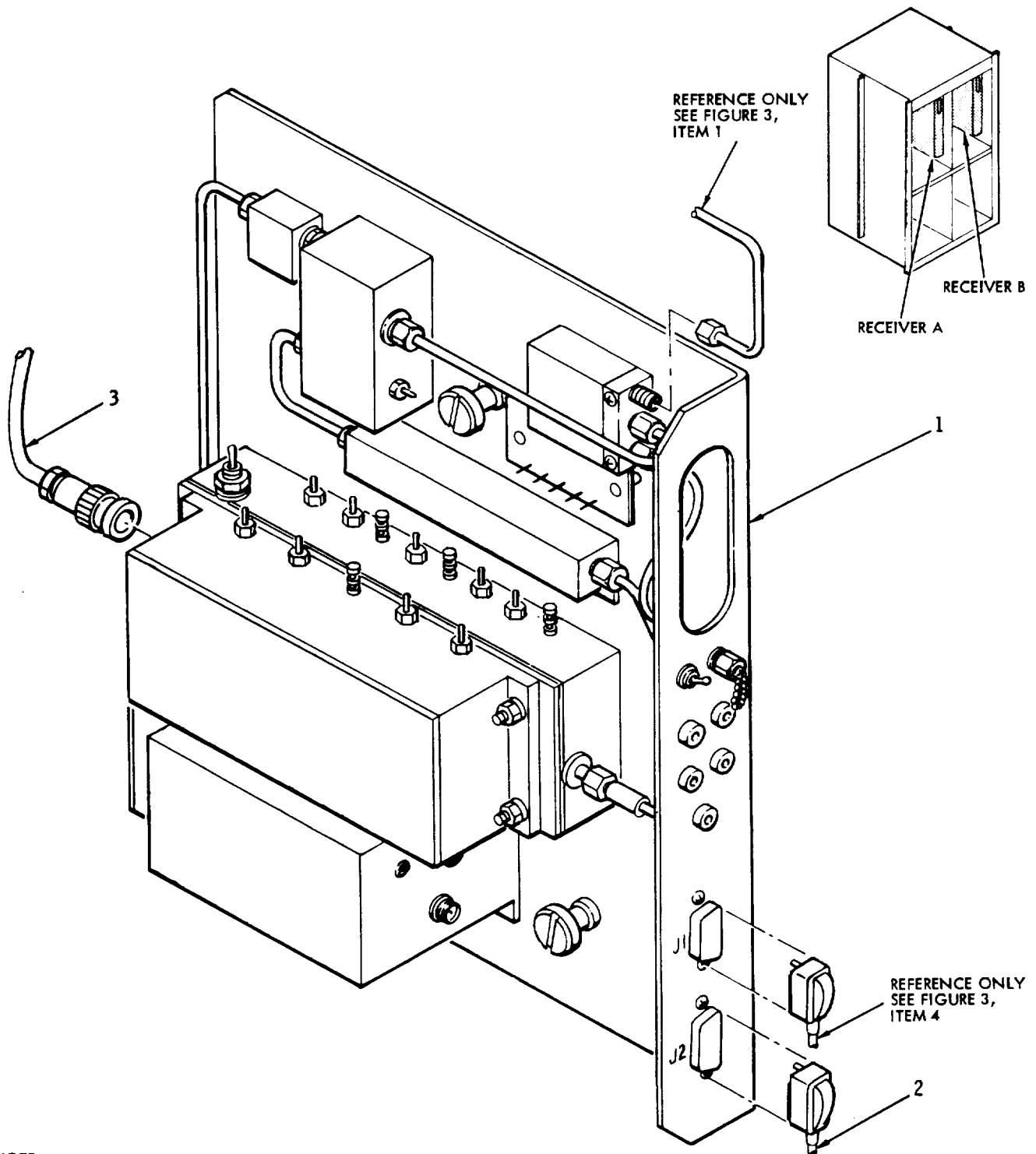
TM 11-5820-863-23P-1/EE150-DV-PLG-010/E110 FRC170, 171, 173/TO 31R5-2FRC171-4

(1) ILLUSTRATION		(2)	(3)	(4)	(5)	(6)	(7)	(8)
(a) FIG NO.	(b) ITEM NO.	SMR CODE	NATIONAL STOCK NUMBER	FSCM	PART NUMBER	DESCRIPTION  USABLE ON CODE	U/M	QTY INC IN UNIT
3	1	PAFZZ	5995-01-147-8454	21847	511322	CABLE ASSEMBLY,RADI ..... DYX,DY1,DY2,DY3,DY6.DY8,DYA	EA	1
3	2	PAFZZ	5995-01-147-8452	21847	511320	CABLE ASSEMBLY,RADI ..... DYX,DY1,DY2,DY3,DY6.DY8,DYA	EA	11
3	3	PAFZZ	5995-01-147-8511	21847	511327	WIRING HARNESS ..... DYX,DY1,DY2,DY3,DY6.DY8,DYA	EA	2
3	4	PAFFF	5995-01-147-8509	21847	511324	WIRING HARNESS ..... DYX,DY1,DY2,DY3,DY6.DY8,DYA	EA	2
3	5	PAODA	5895-01-131-4179	21847	C11380-1	TRANSMITTER ASSEMBL 8140 MHZ..... DY8	EA	2
3	5	PAODA	5895-01-128-1800	11982	C511380-102	TRANSMITTER ASSEMBL 8350 MHZ..... DY8	EA	2
3	5	PAODD	5895-01-110-9617	11982	C511380-105	TRANSMITTER ASSEMBL 8232.5 MHZ..... DYX,DY6,DY8	EA	2
3	5	PAODD	5895-01-110-9618	11982	C511380-106	TRANSMITTER ASSEMBL 8295.5 MHZ..... DYX,DY8	EA	2
3	5	PAODD	5895-01-110-9619	11982	C511380-107	TRANSMITTER ASSEMBL 8176.5 MHZ..... DY8	EA	2
3	5	PAODD	5895-01-110-9620	11982	C511380-108	TRANSMITTER ASSEMBL 8393.5 MHZ..... DYX,DY6,DY8	EA	2
3	5	PAODD	5895-01-110-9621	11982	C511380-109	TRANSMITTER ASSEMBL 8134.5 MHZ..... DYX,DY8	EA	2
3	5	PAODD	5895-01-110-9622	11982	C511380-110	TRANSMITTER ASSEMBL 8337.5 MHZ..... DY8	EA	2
3	5	PAODO	58J5-01-110-9623	11982	C511380-111	TRANSMITTER ASSEMBL 8351.5 MHZ..... DY8	EA	2
3	5	PAODD	5895-01-110-9624	11982	C511380-112	TRANSMITTER ASSEMBL 8365.5 MHZ..... DY6,DY8	EA	2
3	5	PAODD	5895-01-110-9625	11982	C511380-113	TRANSMITTER ASSEMBL 8204.5 MHZ..... DY6,DY8	EA	2
3	5	PAODD	5895-01-110-9626	11982	C511380-114	TRANSMITTER ASSEMBL 7890 MHZ..... DY8,DZA	EA	2
3	5	PAODD	5895-01-110-9627	11982	C511380-115	TRANSMITTER ASSEMBL 7730 MHZ..... DY8,DZA	EA	2
3	5	PAODD	5895-01-110-9628	11982	C511380-148	TRANSMITTER ASSEMBL 8070 MHZ..... DYX,DY1,DY6	EA	2
3	5	PAODD	5895-01-110-9629	11982	C511380-149	TRANSMITTER ASSEMBL 8153.5 MHZ..... DY8	EA	2
3	5	PAODD	5895-01-110-9630	11982	C511380-118	TRANSMITTER ASSEMBL 8379.5 MHZ..... DY8	EA	2
3	5	PAODD	5895-01-110-9631	11982	C511380-119	TRANSMITTER ASSEMBL 7861.25 MHZ..... DYX,DY1,DY6	EA	2
3	5	PAODO	5895-01-110-9632	11982	C511380-120	TRANSMITTER ASSEMBL 7748.75 MHZ..... DYX,DY1,DY6	EA	2
3	5	PAODD	5895-01-110-9633	11982	C511380-121	TRANSMITTER ASSEMBL 8323.5 MHZ..... DY8	EA	2
3	5	PAODD	5895-01-110-9634	11982	C511380-122	TRANSMITTER ASSEMBL 8162.5 MHZ..... DY8	EA	2
3	5	PAODD	5895-01-110-9635	11982	C511380-123	TRANSMITTER ASSEMBL 8190.5 MHZ..... DY8	EA	2
3	5	PAODD	5895-01-110-9636	11982	C511380-150	TRANSMITTER ASSEMBL 7886.25 MHZ..... DY8	EA	2
3	5	PAODD	5895-01-110-9637	11982	C511380-125	TRANSMITTER ASSEMBL 7761.25 MHZ..... DY2	EA	2
3	5	PAODD	5895-01-110-9638	11982	C511380-151	TRANSMITTER ASSEMBL 7773.75 MHZ..... DY8	EA	2
3	5	PAODD	5895-01-110-9639	11982	C511380-127	TRANSMITTER ASSEMBL 7873.25 MHZ..... DY2	EA	2
3	5	PAODD	5895-01-110-9640	11982	C511380-128	TRANSMITTER ASSEMBL 8218.5 MHZ..... DY8	EA	2
3	5	PAODD	5895-01-110-9641	11982	C511380-131	TRANSMITTER ASSEMBL 7763 MHZ..... DY8	EA	2
3	5	PAODD	5895-01-110-9642	11982	C511380-130	TRANSMITTER ASSEMBL 7405 MHZ..... DY8	EA	2
3	5	PAODD	5895-01-110-9644	11982	C511380-136	TRANSMITTER ASSEMBL 8105 MHZ..... DY8	EA	2
3	5	PAODD	5895-01-110-9645	11982	C511380-138	TRANSMITTER ASSEMBL 8335 MHZ..... DY8	EA	2
3	5	PAODD	5895-01-110-9646	11982	C511380-134	TRANSMITTER ASSEMBL 7537 MHZ..... DY8	EA	2
3	5	PAODD	5895-01-110-9647	11982	C511380-133	TRANSMITTER ASSEMBL 7729 MHZ..... DY8	EA	2
3	5	PAODD	5895-01-110-9648	11982	C511380-135	TRANSMITTER ASSEMBL 8235 MHZ..... DY8	EA	2
3	5	PAODD	5895-01-110-9649	11982	C511380-137	TRANSMITTER ASSEMBL 8185 MHZ..... DY8	EA	2
3	5	PAODD	5895-01-110-9650	11982	C511380-139	TRANSMITTER ASSEMBL 8148.5 MHZ..... DY8	EA	2
3	5	PAODD	5895-01-110-9651	11982	C511380-140	TRANSMITTER ASSEMBL 8309.5 MHZ..... DY8	EA	2

SECTION II

TM 11-5820-863-23P-1/EE150-DV-PLG-010/E110 FRC170, 171, 173/TO 31R5-2FRC171-4

(1) ILLUSTRATION		(2)	(3)	(4)	(5)	(6)	(7)	(8)
(a) FIG NO.	(b) ITEM NO.	SMR CODE	NATIONAL STOCK NUMBER	FSCM	PART NUMBER	DESCRIPTION  USABLE ON CODE	U/M	QTY INC IN UNIT
3	5	PAODD	5895-01-110-9652	11982	C511380-141	TRANSMITTER ASSEMBL 8285 MHZ.....DY8	EA	2
3	5	PAODD	5895-01-110-9653	11982	C511380-142	TRANSMITTER ASSEMBL 8318 MHZ.....DY8	EA	2
3	5	PAODD	5895-01-110-9654	11982	C511380-143	TRANSMITTER ASSEMBL 8250 MHZ.....DYB	EA	2
3	5	PAODD	5895-01-110-9655	11982	C511380-144	TRANSMITTER ASSEMBL 8346 MHZ.....DY8	EA	2
3	5	PAODD	5895-01-110-9656	11982	C511380-145	TRANSMITTER ASSEMBL 8205 MHZ.....DY8	EA	2
3	5	PAODD	5895-01-110-9658	11982	C511380-147	TRANSMITTER ASSEMBL 8125.5 MHZ.....DY8	EA	2
3	5	PAODD	5895-01-142-3440	11982	C511380-244	TRANSMITTER ASSEMBL 7690 MHZ.....DY3	EA	2
3	5	PAODD	5895-01-145-5195	11982	C511380-245	TRANSMITTER ASSEMBL 7850 MHZ.....DY3	EA	2
					<b>10</b>			



NOTE:  
ALL PARTS IDENTIFIED ARE TYPICAL  
FOR BOTH RECEIVER ASSEMBLIES.

EL8CX015

Figure 4. Receiver Assembly - RF, 8 GHz

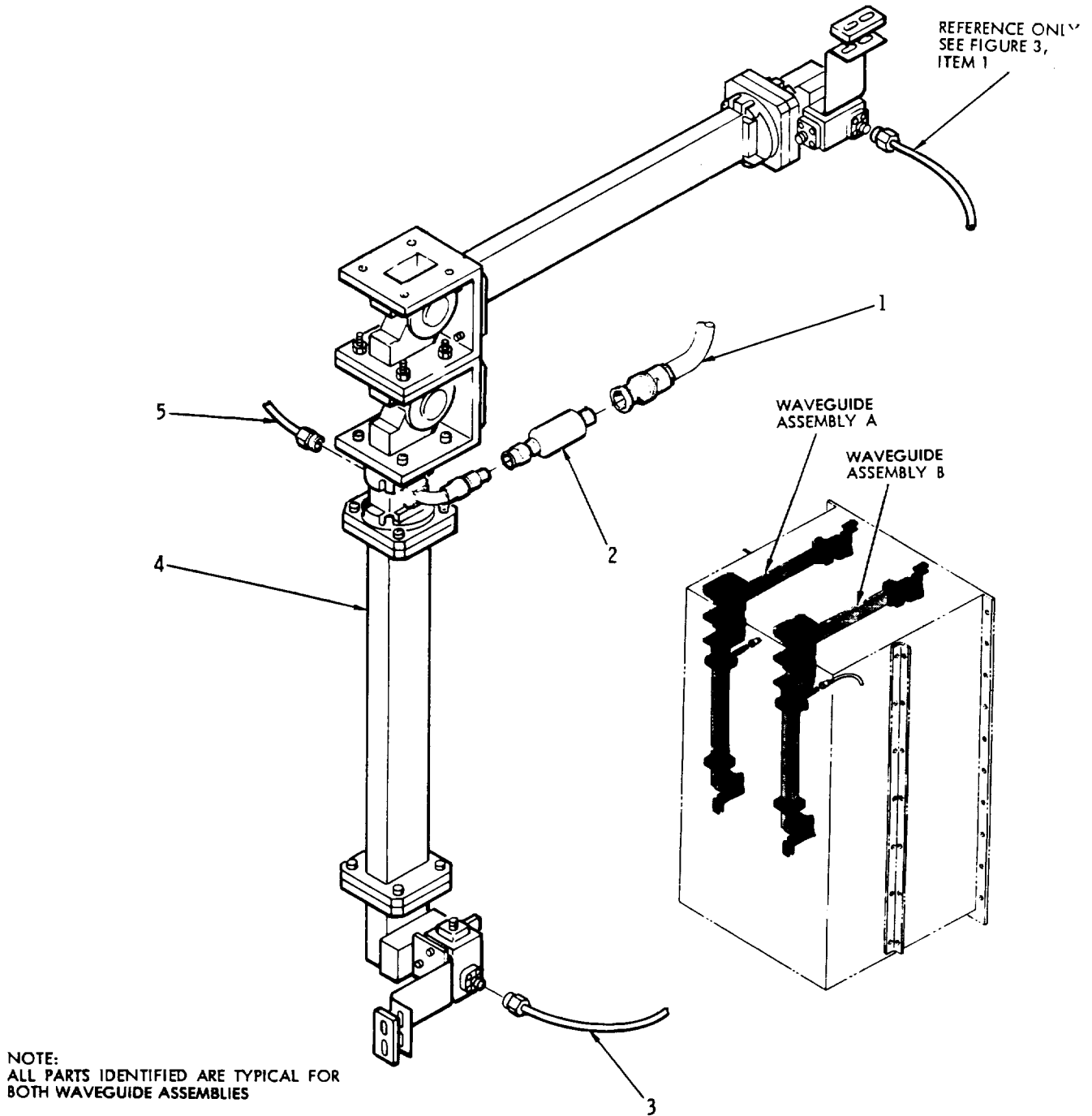
(1) ILLUSTRATION		(2)	(3)	(4)	(5)	(6)	(7)	(8)
(a) FIG NO.	(b) ITEM NO.	SMR CODE	NATIONAL STOCK NUMBER	FSCM	PART NUMBER	DESCRIPTION  USABLE ON CODE	U/M	QTY INC IN UNIT
						GROUP 0103 RECEIVER ASSEMBLY-RF,8GHZ		
4	1	PAODD	5895-01-120-1801	11982	C511410-1	RECEIVER,RADIO 8353 MHZ.....DY8	EA	2
4	1	PAODD	5895-01-110-9665	11982	C511410-3	RECEIVER,RADIO 7748.75 MHZ.....DYX,DY1	EA	2
4	1	PAODD	5895-01-110-9666	11982	C511410-4	RECEIVER,RADIO 7890 MHZ.....DZA	EA	2
4	1	PAODD	5895-01-111-0086	11982	C511410-102	RECEIVER,RADIO 8140 MHZ.....DY8	EA	2
4	1	PAODD	5895-01-111-0060	11982	C511410-103	RECEIVER,RADIO 8393.5 MHZ.....DY6,OY8	EA	2
4	1	PAODD	5895-01-111-0059	11982	C511410-104	RECEIVER,RADIO 8134.5 MHZ.....DY8	EA	2
4	1	PAODD	5895-01-111-0058	11982	C511410-105	RECEIVER,RADIO 8337.5 MHZ.....DY8	EA	2
4	1	PAODD	5895-01-111-0057	11982	C511410-106	RECEIVER,RADIO 8232.5 MHZ.....DY6,DY8	EA	2
4	1	PAODD	5895-01-111-0056	11982	C511410-107	RECEIVER,RADIO 8295.5 MHZ.....DY8	EA	2
4	1	PAODD	5895-01-111-0055	11982	C511410-108	RECEIVER,RADIO 8176.5 MHZ.....DY8	EA	2
4	1	PAODD	5895-01-111-0054	11982	C511410-109	RECEIVER,RADIO 8190.5 MHZ.....DY8	EA	2
4	1	PAODD	5895-01-111-0053	11982	C511410-110	RECEIVER,RADIO 8204.5 MHZ.....DY6,DY8	EA	2
4	1	PAODD	5895-01-111-0052	11982	C511410-111	RECEIVER,RADIO 8365.5 MHZ.....DY8	EA	2
4	1	PAODD	5895-01-111-0051	11982	C511410-112	RECEIVER,RADIO 7730 MHZ.....DY8	EA	2
4	1	PAODD	5895-01-111-0050	11982	C511410-113	RECEIVER,RADIO 7890 MHZ.....DY8	EA	2
4	1	PAODD	5895-01-111-0049	11982	C511410-114	RECEIVER,RADIO 8218.5 MHZ.....DY8	EA	2
4	1	PAODD	5895-01-111-0048	11982	C511410-115	RECEIVER,RADIO 8162.5 MHZ.....DY8	EA	2
4	1	PAODD	5895-01-111-0047	11982	C511410-116	RECEIVER,RADIO 8323.5 MHZ.....DY8	EA	2
4	1	PAODD	5895-01-111-0046	11982	C511410-117	RECEIVER,RADIO 8351.5 MHZ.....DY8	EA	2
4	1	PAODD	5895-01-111-3974	11982	C511410-118	RECEIVER,RADIO 8379.5 MHZ.....DY8	EA	2
4	1	PAODD	5895-01-111-0045	11982	C511410-309	RECEIVER,RADIO 8232.5 MHZ.....DYX	EA	2
4	1	PAODD	5895-01-111-0044	11982	C511410-310	RECEIVER,RADIO 8393.5 MHZ.....DYX	EA	2
4	1	PAODD	5895-01-111-0043	11982	C511410-302	RECEIVER,RADIO 7861.25 MHZ.....DYX,DY1	EA	2
4	1	PAODD	5895-01-111-0042	11982	C511410-303	RECEIVER,RADIO 7873.15 MHZ.....DY2	EA	2
4	1	PAODD	5895-01-111-0040	11982	C511410-305	RECEIVER,RADIO 7761.25MHZ.....DY2	EA	2
4	1	PAODD	5895-01-152-5846	11982	C511410-402	RECEIVER,RADIO 7730 MHZ.....DZA	EA	2
4	1	PAODD	5895-01-111-0084	11982	C511410-121	RECEIVER,RADIO 8185 MHZ.....DY8	EA	2
4	1	PAODD	5895-01-111-0083	11982	C511410-120	RECEIVER,RADIO 8105 MHZ.....DY8	EA	2
4	1	PAODD	5895-01-111-0081	11982	C511410-126	RECEIVER,RADIO 7405 MHZ.....DY8	EA	2
4	1	PAODD	5895-01-111-0080	11982	C511410-128	RECEIVER,RADIO 7729 MHZ.....DY8	EA	2
4	1	PAODD	5895-01-111-0079	11982	C511410-124	RECEIVER,RADIO 8235 MHZ.....DY8	EA	2
4	1	PAODD	5895-01-111-0078	11982	C511410-123	RECEIVER,RADIO 8335 MHZ.....DY8	EA	2
4	1	PAODD	5895-01-111-0077	11982	C511410-125	RECEIVER,RADIO 7537 MHZ.....DY8	EA	2
4	1	PAODD	5895-01-111-0076	11982	C511410-127	RECEIVER,RADIO 7763 MHZ.....DY8	EA	2
4	1	PAODD	5895-01-111-0075	11982	C511410-133	RECEIVER,RADIO 8125.5 MHZ.....DY8	EA	2
4	1	PBODD	5895-01-139-0339	11982	C511410-135	RECEIVER,RADIO 8153.5 MHZ.....DY8	EA	2
4	1	PAODD	5895-01-111-0074	11982	C511410-129	RECEIVER,RADIO 8309.5 MHZ.....DY8	EA	2
4	1	PAODD	5895-01-111-0073	11982	C511410-130	RECEIVER,RADIO 8148.5 MHZ.....DY8	EA	2
4	1	PAODD	5895-01-111-0071	11982	C511410-136	RECEIVER,RADIO 3318 MHZ.....DY8	EA	2



SECTION II

TM 11-5820-863-23P-1/EE150-DV-PLG-010/E110 FRC170, 171, 173/TO 31R5-2FRC171-4

(1) ILLUSTRATION		(2)	(3)	(4)	(5)	(6)	(7)	(8)
(a) FIG NO.	(b) ITEM NO.	SMR CODE	NATIONAL STOCK NUMBER	FSCM	PART NUMBER	DESCRIPTION  USABLE ON CODE	U/M	QTY INC IN UNIT
4	1	PAODD	5895-01-111-0070	11982	C511410-139	RECEIVER,RADIO 8346 MHZ..... DY8	EA	2
4	1	PAODD	5895-01-111-0069	11982	C511410-132	RECEIVER,RADIO 8205 MHZ..... DY8	EA	2
4	1	PAODD	5895-01-111-0068	11982	C511410-134	RECEIVER,RADIO 8070 MHZ..... DY8	EA	Z
4	1	PAODD	5895-01-111-0067	11982	C511410-137	RECEIVER,RADIO 8285 MHZ..... DY8	EA	2
4	1	PAODD	5895-01-111-0066	11982	C511410-138	RECEIVER,RADIO 8250 MHZ..... DY8	EA	2
4	1	PAODD	5895-01-111-0065	11982	C511410-140	RECEIVER,RADIO 7773.75 MHZ..... DY8	EA	2
4	1	PAODD	5895-01-111-0064	11982	C511410-141	RECEIVER,RADIO 7886.25 MHZ..... DY8	EA	Z
4	1	PAODA	5895-01-131-4219	21847	511410-142	RECEIVER,RADIO 7861.25 MHZ..... DY6	EA	2
4	1	PAODA	5895-01-131-4220	21847	511410-211	RECEIVER,RADIO 7748.75 MHZ..... DY6	EA	2
4	1	PAODD	5895-01-111-0062	11982	C511410-307	RECEIVER,RADIO 8295.5 MHZ..... DYX,DY2	EA	2
4	1	PAODD	5895-01-111-0061	11982	C511410-308	RECEIVER,RADIO 8134.5 MHZ..... DYX,DY2	EA	2
4	1	PAODA	5895-01-141-3810	11982	C511410-315	RECEIVER,RADIO 7850 MMHZ..... DY3	EA	2
4	1	PAODA	5895-01-141-3809	11982	C511410-316	RECEIVER,RADIO 7690 MMHZ..... DY3	EA	2
4	2	PAFFF	5995-01-147-8512	21847	511328	WIRING HARNESS .....DYX,DY1,DY2,DY3,DY6,DY8,DZA	EA	2
4	3	PAFZZ	5995-01-147-8456	21847	511319	CABLE ASSEMBLY,RADI .....DYX,DY1,DY2,DY3,DY6,DY8,DZA	EA	2
14								



EL8CX016

Figure 5. Waveguide Assembly/FRC-171



SECTION II

(1) ILLUSTRATION		(2)	(3)	(4)	(5)	(6)	(7)	(8)
(a) FIG NO.	(b) ITEM NO.	SMR CODE	NATIONAL STOCK NUMBER	FSCM	PART NUMBER	DESCRIPTION  USABLE ON CODE	U/M	QTY INC IN UNIT
5	2	PAFZA	5820-01-126-9516	11982	C511334-1	DETECTOR,RADIO FREQ..... DYX,DY1,DY2,DY3,DY6,DY8,DZA	EA	1
5	2	PAFZA	5820-01-126-9516	11982	C511334-1	DETECTOR,RADIO FREQ..... DYX,DY1,DY2,DY3,DY6,DY8,DZA	EA	1
5	2	PAFZA	5820-01-126-9516	11982	C511334-1	DETECTOR,RADIO FREQ..... DYX,DY1,DY2,DY3,DY6,DY8,DZA	EA	1
5	2	PAFZA	5820-01-126-9516	11982	C511334-1	DETECTOR,RADIO FREQ..... DYX,DY1,DY2,DY3,DY6,DY8,DZA	EA	1
5	2	PAFZA	5820-01-126-9516	11982	C511334-1	DETECTOR,RADIO FREQ..... DYX,DY1,DY2,DY3,DY6,DY8,DZA	EA	1
5	2	PAFZA	5820-01-126-9516	11982	C511334-1	DETECTOR,RADIO FREQ..... DYX,DY1,DY2,DY3,DY6,DY8,DZA	EA	1
5	2	PAFZA	5820-01-126-9516	11982	C511334-1	DETECTOR,RADIO FREQ..... DYX,DY1,DY2,DY3,DY6,DY8,DZA	EA	1
5	2	PAFZA	5820-01-126-9516	11982	C511334-1	DETECTOR,RADIO FREQ..... DYX,DY1,DY2,DY3,DY6,DY8,DZA	EA	1
5	2	PAFZA	5820-01-126-9516	11982	C511334-1	DETECTOR,RADIO FREQ..... DYX,DY1,DY2,DY3,DY6,DY8,DZA	EA	1
5	3	PAFZZ	5995-01-147-8453	21847	511321	CABLE ASSEMBLY,RADI..... DYX,DY1,DY2,DY3,DY6,DY8,DZA	EA	1
5	4	PAODA	5985-01-131-4275	21847	511330-1	WAVEGUIDE ASSEMBLY .....DY8	EA	2
5	4	PAODA	5985-01-131-4276	21847	511330-102	WAVEGUIDE ASSEMBLY .....DY8	EA	2
5	4	PAODA	5985-01-131-4277	21847	511330-103	WAVEGUIDE ASSEMBLY .....DYX,DY6,DY8	EA	2
5	4	PAODA	5985-01-131-4278	21847	511330-104	WAVEGUIDE ASSEMBLY .....DYX,DY6,DY8	EA	2
5	4	PAODA	5985-01-131-4279	21847	511330-106	WAVEGUIDE ASSEMBLY .....DYX,DY8	EA	2
5	4	PAODA	5985-01-131-4280	21847	511330-107	WAVEGUIDE ASSEMBLY .....DY8	EA	2
5	4	PAODA	5985-01-131-4281	21847	511330-109	WAVEGUIDE ASSEMBLY .....DYX,DY8	EA	2
5	4	PAODA	5985-01-131-4282	21847	511330-110	WAVEGUIDE ASSEMBLY .....DY8	EA	2
5	4	PAODA	5985-01-131-4283	21847	511330-111	WAVEGUIDE ASSEMBLY .....DY8	EA	2
5	4	PAODA	5985-01-131-4284	21847	511330-112	WAVEGUIDE ASSEMBLY .....DY6,DY8	EA	2
5	4	PAODA	5985-01-131-4285	21847	511330-113	WAVEGUIDE ASSEMBLY .....DY6,DY8	EA	2
5	4	PAODA	5985-01-131-4286	21847	511330-114	WAVEGUIDE ASSEMBLY .....DY6,DZA	EA	2
5	4	PAODA	5985-01-131-4287	21847	511330-115	WAVEGUIDE ASSEMBLY .....DY6,DZA	EA	2
5	4	PAODA	5985-01-131-4288	21847	511330-118	WAVEGUIDE ASSEMBLY .....DY8	EA	2
5	4	PAODA	5985-01-131-4289	21847	511330-119	WAVEGUIDE ASSEMBLY .....DY1,DY6	EA	2
5	4	PAODA	5985-01-131-4290	21847	511330-120	WAVEGUIDE ASSEMBLY .....DY1,DY6	EA	2
5	4	PAODA	5985-01-131-4291	21847	511330-121	WAVEGUIDE ASSEMBLY .....DY8	EA	2
5	4	PAODA	5985-01-131-4292	21847	511330-122	WAVEGUIDE ASSEMBLY .....DY8	EA	2
5	4	PADDA	5985-01-131-4293	21847	511330-123	WAVEGUIDE ASSEMBLY .....DY8	EA	2
5	4	PAODA	5985-01-131-4294	21847	511330-125	WAVEGUIDE ASSEMBLY .....DY2	EA	2
5	4	PAODA	5985-01-131-4295	21847	511330-127	WAVEGUIDE ASSEMBLY .....DY2	EA	2
5	4	PAODA	5985-01-131-4296	21847	511330-128	WAVEGUIDE ASSEMBLY .....DY8	EA	2
5	4	PAODA	5985-01-131-4298	21847	511330-130	WAVEGUIDE ASSEMBLY .....DY8	EA	2
5	4	PAODA	5985-01-131-4299	21847	511330-131	WAVEGUIDE ASSEMBLY .....DY8	EA	2
5	4	PAODA	5485-01-131-4300	21847	511330-132	WAVEGUIDE ASSEMBLY .....DY8	EA	2
5	4	PAODA	5985-01-131-4301	21847	511330-133	WAVEGUIDE ASSEMBLY .....DY8	EA	2
5	4	PAODA	5985-01-131-4302	21847	511330-134	WAVEGUIDE ASSEMBLY .....DY8	EA	2
5	4	PAODA	5985-01-131-4303	21847	511330-135	WAVEGUIDE ASSEMBLY .....DY8	EA	2
5	4	PAODA	5985-01-131-4304	21847	511330-136	WAVEGUIDE ASSEMBLY .....DY8	EA	2

SECTION II

TM 11-5820-863-23P-1/EE150-DV-PLG-010/E110 FRC170,171,173/TO 31R5-2FRC171-4

(1) ILLUSTRATION		(2)	(3)	(4)	(5)	(6)	(7)	(8)
(a) FIG NO.	(b) ITEM NO.	SMR CODE	NATIONAL STOCK NUMBER	FSCM	PART NUMBER	DESCRIPTION  USABLE ON CODE	U/M	QTY INC IN UNIT
5	4	PAODA	5985-01-131-4305	21847	511330-137	WAVEGUIDE ASSEMBLY .....DY8	EA	2
5	4	PAODA	5985-01-131-4306	21847	511330-138	WAVEGUIDE ASSEMBLY .....DY8	EA	2
5	4	PAODA	5985-01-131-4307	21847	511330-139	WAVEGUIDE ASSEMBLY .....DY8	EA	2
5	4	PAODA	5985-01-131-4308	21847	511330-140	WAVEGUIDE ASSEMBLY .....DY8	EA	2
5	4	PAODA	5985-01-131-4309	21847	511330-141	WAVEGUIDE ASSEMBLY .....DY8	EA	2
5	4	PAODA	5985-01-131-4310	21847	511330-142	WAVEGUIDE ASSEMBLY .....DY8	EA	2
5	4	PAODA	5985-01-131-4311	21841	511330-143	WAVEGUIDE ASSEMBLY .....DY8	EA	2
5	4	PAODA	5985-01-132-7016	21847	511330-144	WAVEGUIDE ASSEMBLY .....DY8	EA	2
5	4	PAODA	5985-01-131-4312	21847	511330-145	WAVEGUIDE ASSEMBLY .....DY8	EA	Z
5	4	PAODA	5985-01-131-4313	21847	511330-146	WAVEGUIDE ASSEMBLY .....DY8	EA	2
5	4	PAODA	5985-01-131-4314	21847	511330-147	WAVEGUIDE ASSEMBLY .....DY8	EA	2
5	4	PAODA	5985-01-131-4315	21847	511330-148	WAVEGUIDE ASSEMBLY .....DY8	EA	2
5	4	PAODA	5985-01-131-4316	21847	511330-149	WAVEGUIDE ASSEMBLY .....DY8	EA	2
5	4	PAODA	5985-01-131-4317	21847	511330-150	WAVEGUIDE ASSEMBLY .....DY8	EA	2
5	4	PAODA	5985-01-131-4318	21847	511330-151	WAVEGUIDE ASSEMBLY .....DY8	EA	2
5	4	PAODA	5985-01-131-4319	21847	511330-152	WAVEGUIDE ASSEMBLY .....DY8	EA	2
5	4	PAODA	5985-01-140-2668	11982	C511330-164	WAVEGUIDE ASSEMBLY .....DY3	EA	2
5	4	PAODA	5985-01-137-9802	21847	511330-166	WAVEGUIDE ASSEMBLY .....DY3	EA	2
5	5	PAFZZ	5995-01-147-8457	21847	511323	CABLE ASSEMBLY,RAD ..... DYX,DY1,DY2,DY3,DY6,DY8,DZA	EA	2

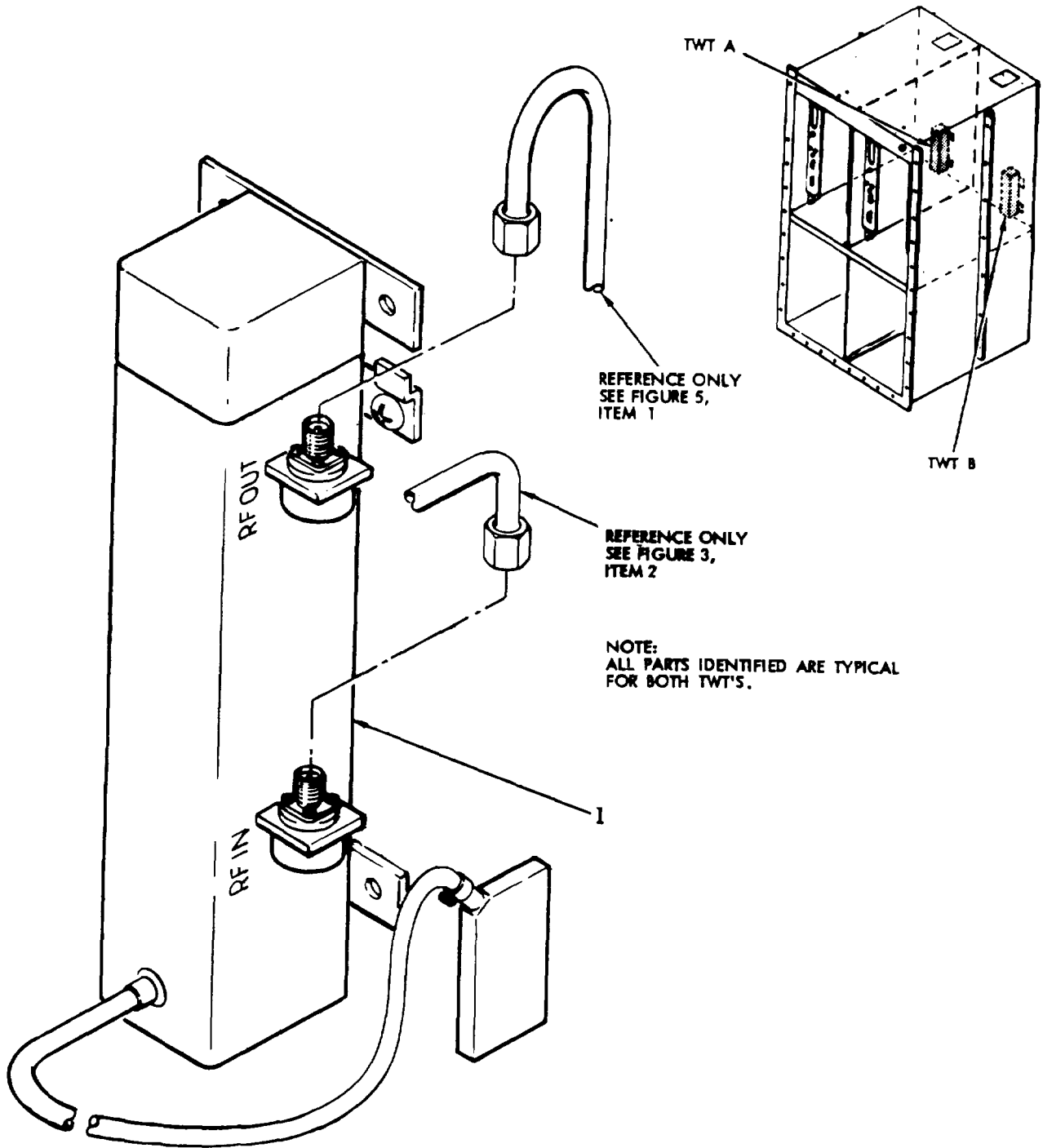


Figure 6 . TWT/8 GHz

SECTION II

TM 11-5820-863-23P-1/EE150-DV-PLG-010/E110 FRC170,171,173/TO 31R5-2FRC171-4

(1) ILLUSTRATION		(2)	(3)	(4)	(5)	(6)	(7)	(8)
(a) FIG NO.	(b) ITEM NO.	SMR CODE	NATIONAL STOCK NUMBER	FSCM	PART NUMBER	DESCRIPTION  USABLE ON CODE	U/M	QTY INC IN UNIT
6	1	PAODA	5960-01-106-7904	11982	C511308-1  <b>21</b>	GROUP 0105 TWT18 GHZ ELECTRON TUBE ..... DYX.DYI.DY2,DY3.DV6,OYB.ZA	EA	2

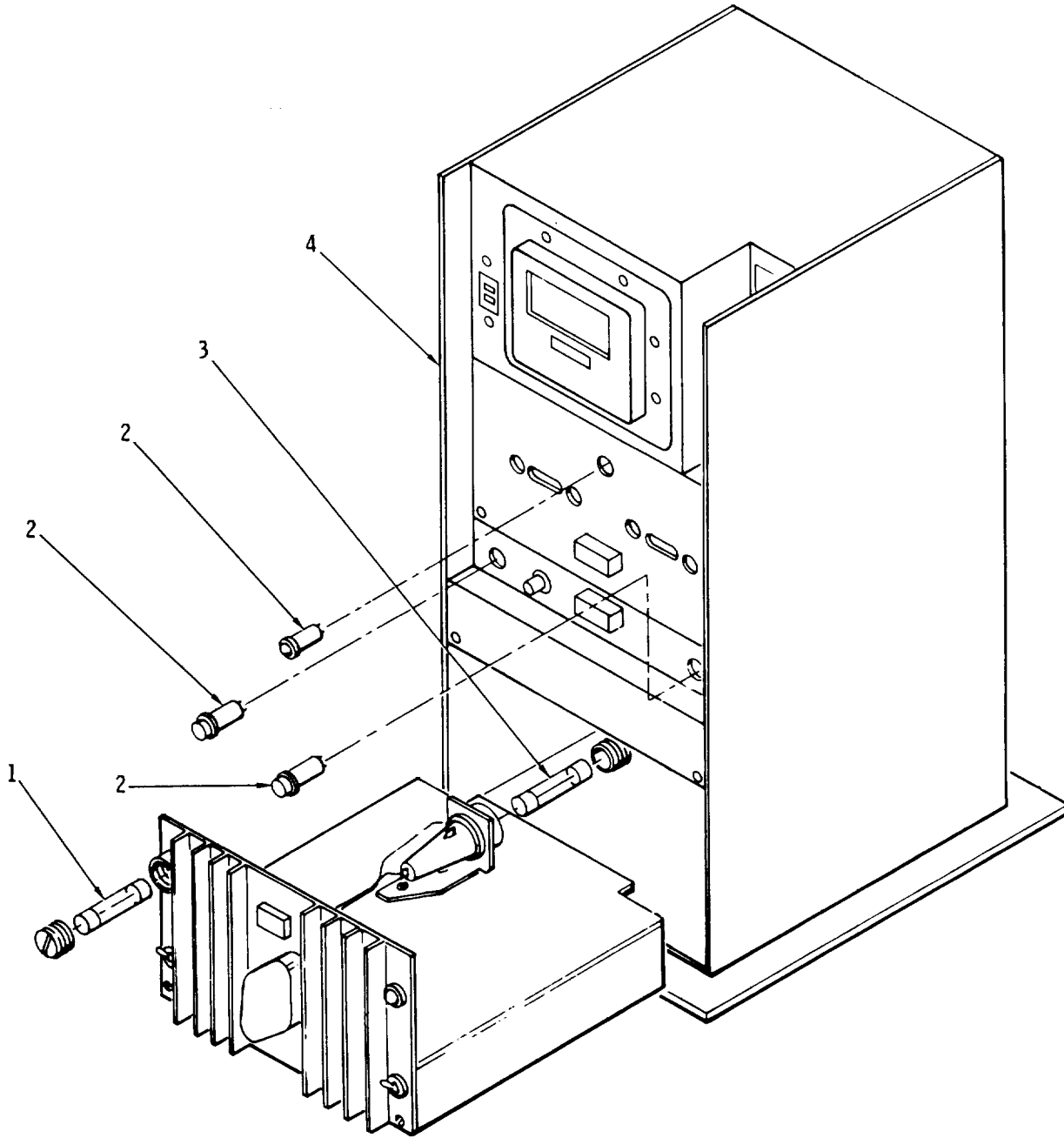


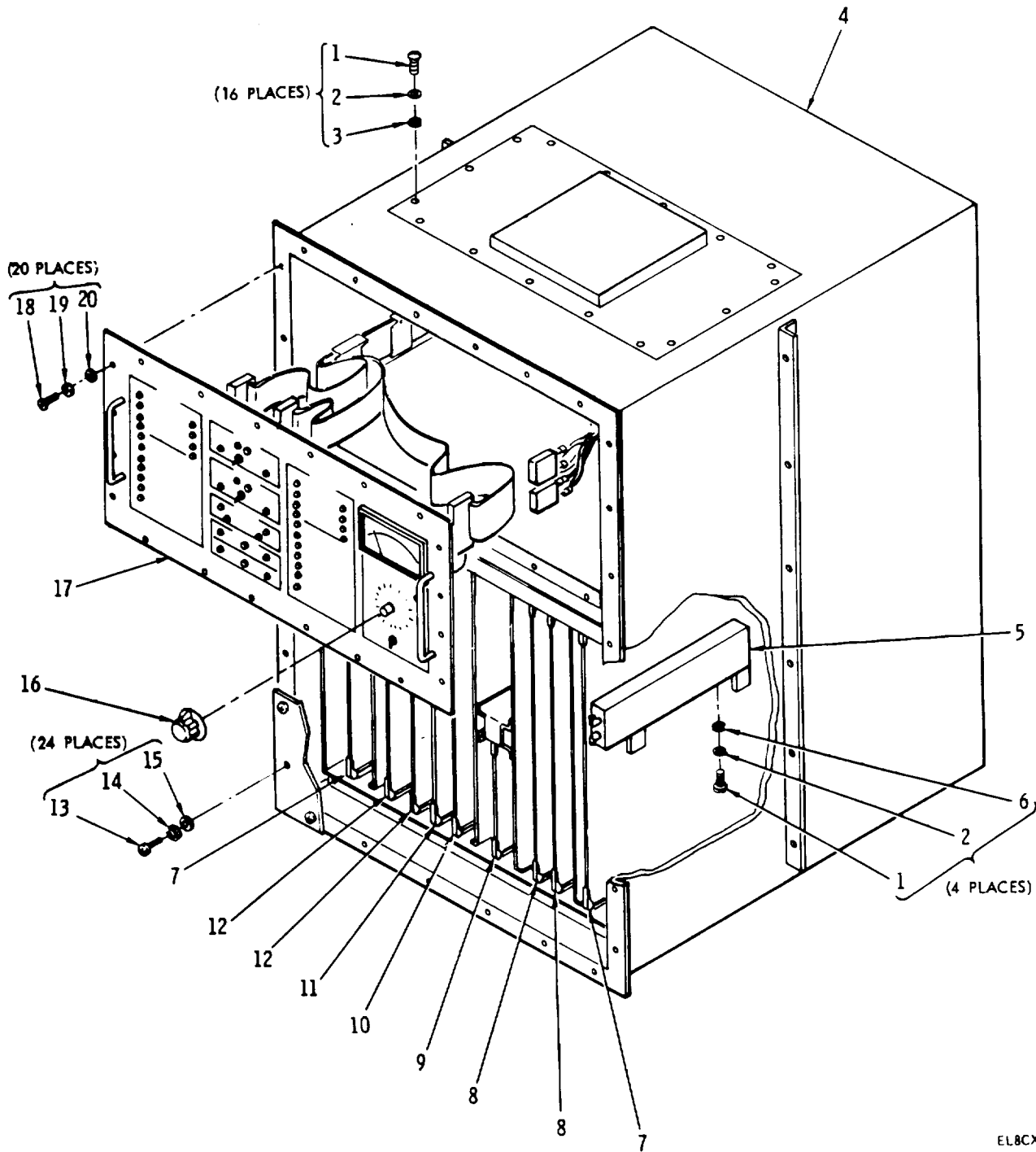
Figure 7 . TWT Power Supply PP-7608/FRC



SECTION II

TM 11-5820-863-23P-1/EE150-DV-PLG-010/E110 FRC170,171,173/TO 31R5-2FRC171-4

(1) ILLUSTRATION		(2)	(3)	(4)	(5)	(6)	(7)	(8)
(a) FIG NO.	(b) ITEM NO.	SMR CODE	NATIONAL STOCK NUMBER	FSCM	PART NUMBER	DESCRIPTION  USABLE ON CODE	U/M	QTY INC IN UNIT
						GROUP 0106 TWT POWER SUPPLY PP-7608/FRC		
7	1	PAFZZ	5920-01-150-6362	75915	211005	FUSE, CARTRIOGE ..... DYX,DY1,DY2,DY3,DY6,DY8,DZA	EA	1
7	2	PAFZZ	6240-01-071-4038	71744	CM3-673	LAMP, INCANDESCENT .....DYX,DY1,DY2,DY3,DY6,D8,DZA	EA	3
7	3	PAFZZ	5920-00-403-2670	71400	GMA2	FUSE, CARTRIDGE ..... DYX,DY1,DY2,DY3,DY6,DY8,DZA	EA	1
7	4	PAGDA	5895-01-110-9597	80058	PP-7608/FRC	POWER SUPPLY ..... DYX,DY1,DY2,DY3,DY6,DY8,DZA	EA	2
					<b>23</b>			



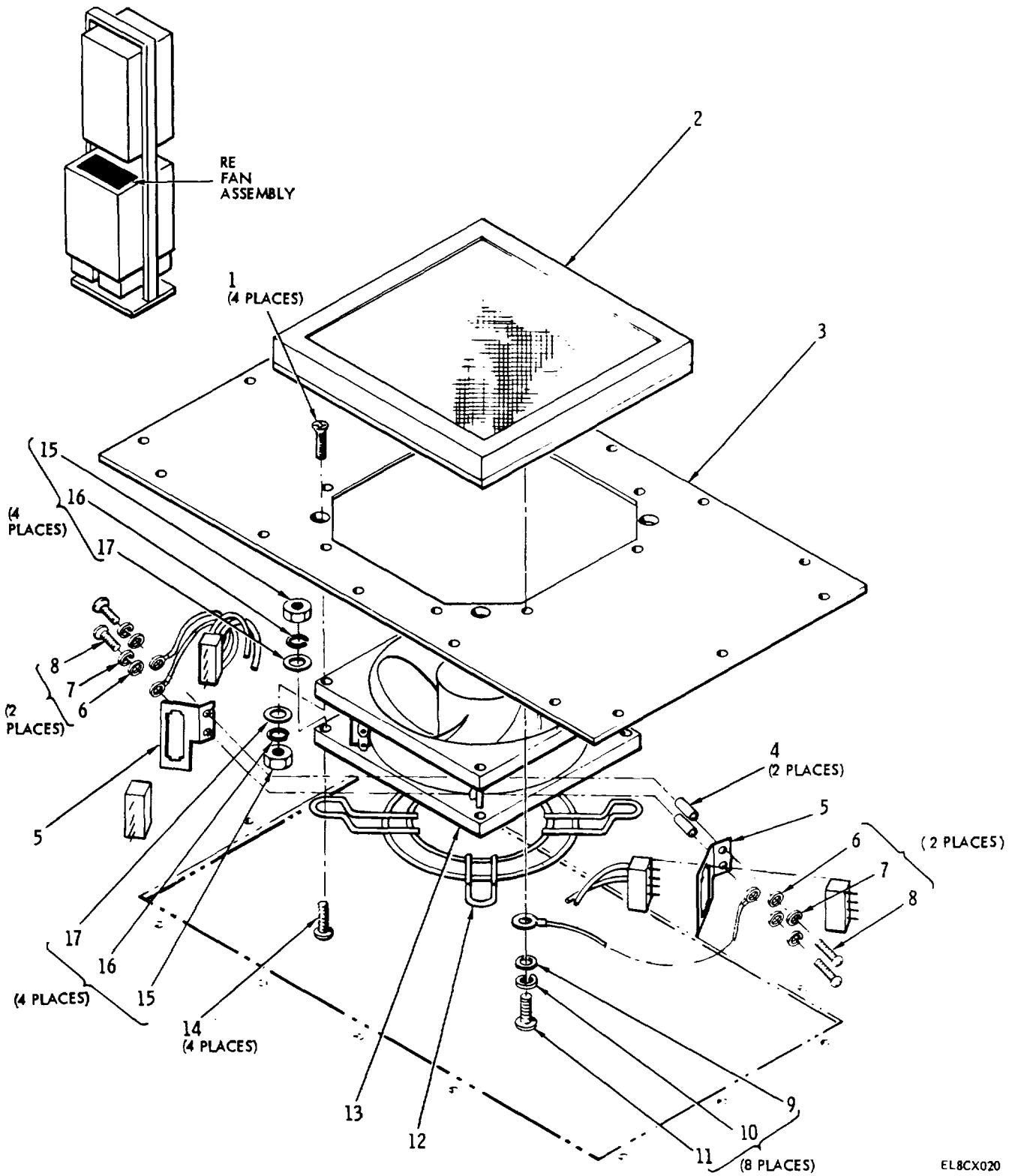
EL8CX019

Figure 8 . Radio Electronics Assembly

SECTION II

TM 11-5820-863-23P-1/EE150-DV-PLG-010/E110 FRC170,171,173/TO 31R5-2FRC171-4

(1) ILLUSTRATION		(2)	(3)	(4)	(5)	(6)	(7)	(8)
(a) FIG NO.	(b) ITEM NO.	SMR CODE	NATIONAL STOCK NUMBER	FSCM	PART NUMBER	DESCRIPTION  USABLE ON CODE	U/M	QTY INC IN UNIT
GROUP 02 RADIO ELECTRONICS ASSEMBLY								
8	1	PAFZZ	5305-00-054-6654	96906	MS51957-30	SCREW, MACHINE ..... DYX,DY1,DY2,DY3,DY6,DY8,DZA	EA	60
8	2	PAFZZ	5310-00-929-6395	96906	MS35338-136	WASHER, LOCK ..... DYX,DY1,DY2,DY3,DY6,DY8,DZA	EA	119
8	3	PAFZZ	5310-00-773-7624	08226	REW620-6	WASHER, FLAT ..... DYX,DY1,DY2,DY3,DY6,DY8,DZA	EA	91
8	4	PAFDD	5820-01-120-8615	80058	CY7852FRC	CABINET, ELECTRICAL ..... ,DYX,DY1,DY2,DY3,DY6,DY8,DZA	EA	1
8	5	PAFZZ	5820-01-121-1917	80058	F1499FRC	FILTER, INTERMEDIATE ..... DYX,DY1,DY2,DY3	EA	2
8	5	PAFZZ	5820-01-121-1916	80058	F1501FRC	FILTER, INTERMEDIATE ..... DY6,DY8	EA	2
8	5	PAFZZ	5820-01-121-1914	80056	F1502FRC	FILTER, ITERMEDIATE ..... DZA	EA	2
8	7	PAODA	5820-01-121-1943	80056	MD1087FRC	MODEM, DIGITAL DATA ..... DYX	EA	2
8	7	PAODA	5815-01-119-9627	80058	MD1083FRC	MODEM, DIGITAL DATA ..... DY1	EA	2
8	7	PAODA	5815-01-119-9115	80058	MD1084FRC	MODEM, DIGITAL DATA ..... DY2,DY3	EA	2
8	7	PAODA	5815-01-119-9626	80058	MD1089FRC	MODEM, DIGITAL DATA ..... DY6	EA	2
8	7	PAODA	5820-01-121-1944	80058	MD1081FRC	MODEM, DIGITAL DATA ..... DY8	LA	2
8	7	PAODA	5815-01-119-9625	80058	MD1091FRC	MODEM, DIGITAL DATAD ..... DZA	EA	2
8	8	PAODA	7025-01-120-7910	80058	TD1310FRL	MULTIPLEXER, DIGITAL ..... DYX	EA	2
8	8	PAODA	7025-01-120-7911	80058	TD1312FRC	MULTIPLEXER, DIGITAL ..... DY1	EA	2
8	8	PAODA	7025-01-120-7913	80058	TD1314FRC	MULTIPLEXER, DIGITAL ..... DY2,DY6	EA	2
8	8	PAODA	7025-01-130-4927	80058	TD1311FRC	MULTIPLEXERDI DIGITAL ..... DY3	EA	2
8	8	PAODD	7025-01-121-1956	80058	TD1315FRC	MULTIPLEXER, DIGITAL ..... DY8,DZA	EA	2
8	9	PAODA	6625-01-110-9568	80058	TD1305FRC	PLUG-IN UNIT TIMIN ..... DYX,DY1,DY2,DY3,DY6,DY8,DZA	EA	1
8	10	PAODO	6625-01-110-9567	80058	ID-2230/FRC	MONITOR MODULE ..... DYX,DY1,DY2,DY3,DY6,DY8,DZA	EA	1
8	11	PADDD	6625-01-110-9566	80058	SA2296FRC	PLUG-IN UNIT SWITCH ..... DYX,DY1,DY2,DY3,DY6,DY8,DZA	EA	1
8	12	PAODD	5821-01-110-9610	80058	TD1304FRC	DEMULTIPLEXER ..... DYX,DY2,DY3,DY6,DY8,DZA	EA	2
8	13	PAFZZ	5305-00-519-6590	96906	MS51957-126	SCREW, MACHINE ..... DYX,DY1,DY2,DY3,DY6,DY8,DZA	EA	68
8	14	PAFZZ	5310-00-933-8119	96906	MS35338-137	WASHER, LOCK ..... DYX,DY1,DY2,DY3,DY6,DY8,DZA	EA	68
8	15	PAFZZ	5310-00-069-5291	80205	NAS620C8	WASER, FLAT ..... DYX,DY1,DY2,DY3,DY6,DY8,DZA	EA	68
8	16	PAOZZ	5355-00-579-6390	96906	MS91528-2F2B	KNOB ..... DYX,DY1,DY2,DY3,DY6,DY8,DZA	EA	1
8	17	PFODD	6625-01-121-1470	80058	TS-3855/FRC	PANEL,TEST,ELECTRIC ..... DYX,DY1,DY2,DY3,DY6,DY8,DZA	EA	1
8	18	PAFZZ	5305-00-054-6670	96906	M551957-45	SCREW, MACHINE ..... DYX,DY1,DY2,DY3,DY6,DY8,DZA	EA	20
8	19	PAFZZ	5310-00-933-8119	96906	MS35338-137	WASHER, LOCK ..... DYX,DY1,DY2,DY3,DY6,DY8,DZA	EA	20
8	20	PAFZZ	5310-00-880-5975	81349	REW620CSL	WASHER, FLAT ..... DYX,DY1,DY2,DY3,DY6,DY8,DZA	EA	20

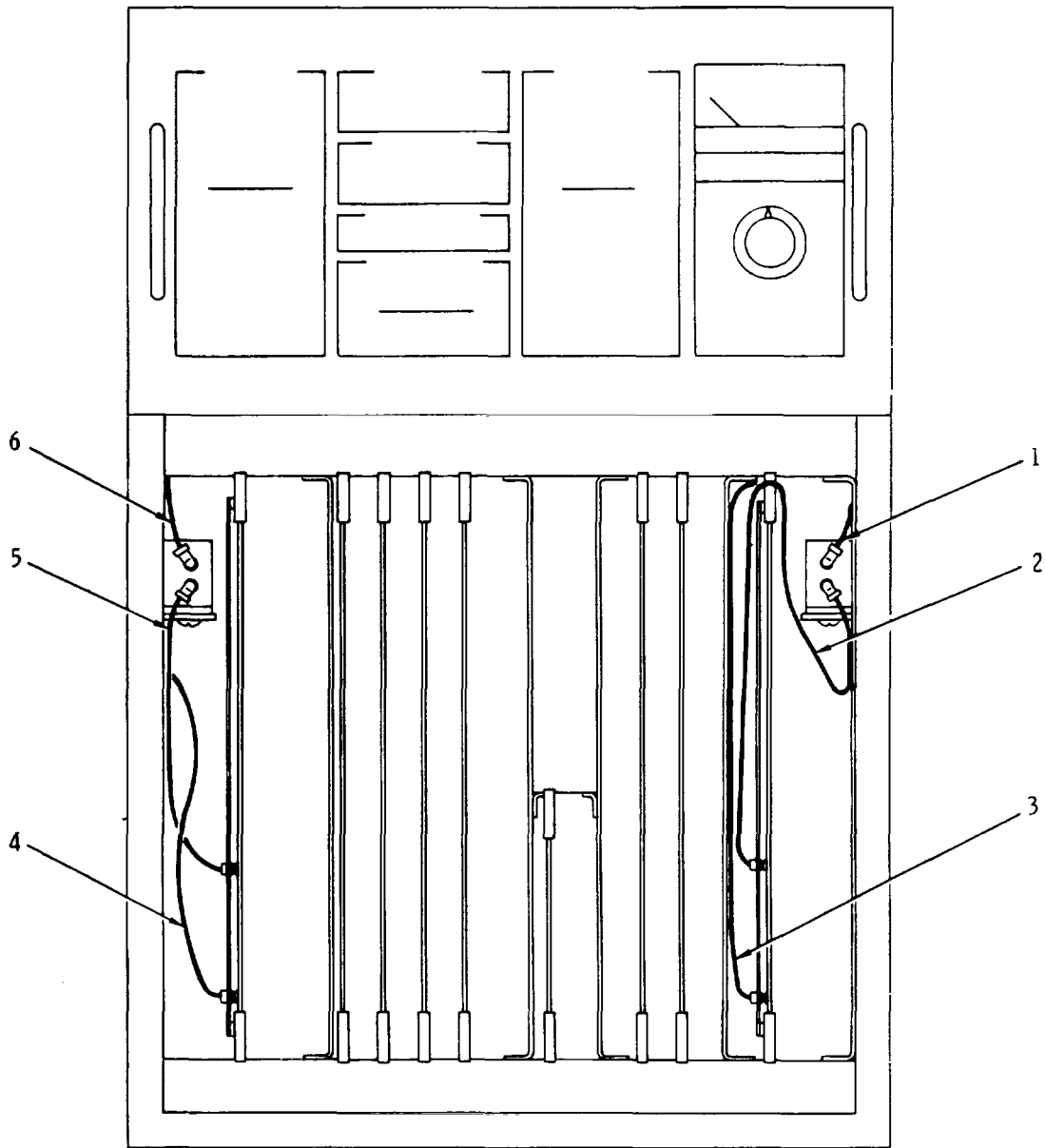


EL8CX020

Figure 9. Electronics Cooling Fan Assembly.

SECTION II

(1) ILLUSTRATION		(2)	(3)	(4)	(5)	(6)	(7)	(8)
(a) FIG NO.	(b) ITEM NO.	SMR CODE	NATIONAL STOCK NUMBER	FSCM	PART NUMBER	DESCRIPTION  USABLE ON CODE	U/M	QTY INC IN UNIT
						GROUP 0210 ELECTRONICS COOLING FAN ASSEMBLY		
9	1	PAFZZ	5305-00-088-9665	96906	MS24693C29	SCREW, MACHINE .....DYX,DY1,DY2,DY3,DY6,DY8,DZA	EA	4
9	2	PAFZZ	5999-00-112-1500	07700	60-70207	SHIELDING GASKET, EL.....DYX,DY1,DY2,DY3,DY6,DY8,DZA	EA	1
9	3	XAFZZ		11982	509971-3	MTG PLATE, FAN.....DYX,DY1,DY2,DY3,DY6,DY8,DZA	EA	1
9	4	XAFZZ		06540	8159A0440	SANDOFF .....DYX,DY1,DY2,DY3,DY6,DY8,DZA	EA	2
9	6	PAFZZ	5310-00-933-8118	96906	MS35338-135	WASHER, LOCK .....DYX,DY1,DY2,DY3,DY6,DY8,DZA	EA	4
9	7	PAFZZ	5310-00-057-0573	88769	91921002	WASHER, FLAT .....DYX,DY1,DY2,DY3,DY6,DY8,DZA	EA	4
9	8	PAFZZ	5305-00-054-5652	96906	MS51957-18	SCREW, MACHINE .....DYX,DY1,DY2,DY3,DY6,DY8,DZA	EA	4
9	9	PAFZZ	5310-00-933-8119	96906	MS35338-137	WASHER, LOCK .....DYX,DY1,DY2,DY3,DY6,DY8,DZA	EA	8
9	10	PAFZZ	5310-00-069-5291	80205	NAS620C8	WASHER, FLAT .....DYX,DY1,DY2,DY3,DY6,DY8,DZA	EA	8
9	11	PAFZZ	5305-00-054-6671	96906	MS51957-46	SCREW, MACHINE .....DYX,DY1,DY2,DY3,DY6,DY8,DZA	EA	8
9	12	XBZZ		82877	550481	FINGERGUARD, PLASTIC .....DYX,DY1,DY2,DY3,DY6,DY8,DZA	EA	1
9	13	PAOZZ	4140-01-101-2422	23936	4148X	FAN, TUBEAXIAL.....DYX,DY1,DY2,DY3,DY6,DY8,DZA	EA	1
9	14	PAFZZ	5305-00-054-6656	96906	MS51957-32	SCREW, MACHINE .....DYX,DY1,DY2,DY3,DY6,DY8,DZA	EA	4
9	15	PAFZZ	5310-00-616-8660	18876	9052346	NUT, PLAIN, HEXAGON .....DYX,DY1,DY2,DY3,DY6,DY8,DZA	EA	8
9	16	PAFZZ	5310-00-929-6395	96906	MS35338-136	WASHER, LOCK .....DYX,DY1,DY2,DY3,DY6,DY8,DZA	EA	8
9	17	PAFZZ	5310-00-773-7624	08226	REW620-6	WASHER, FLAT .....DYX,DY1,DY2,DY3,DY6,DY8,DZA	EA	8
<b>27</b>								



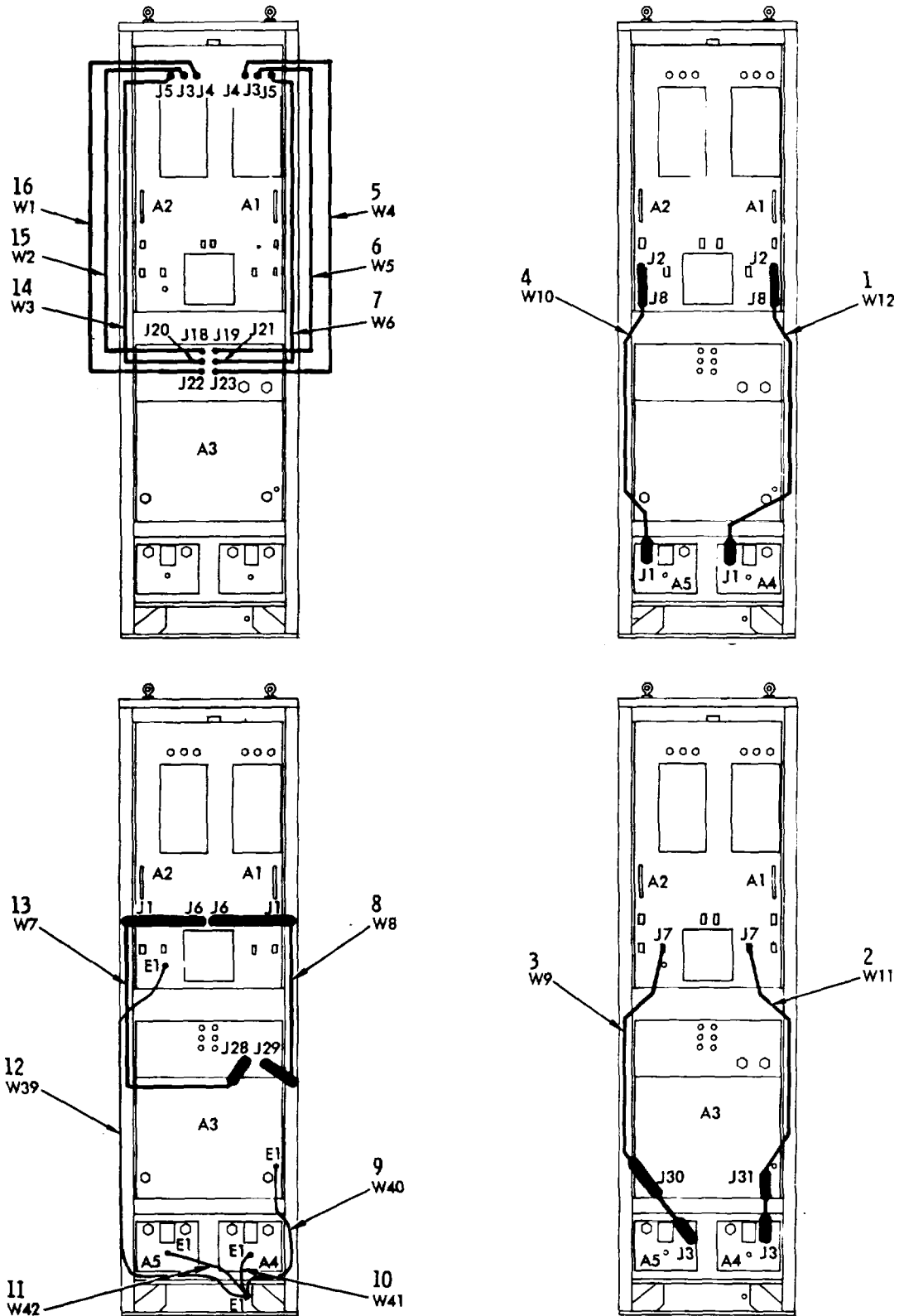
FL8CX021

Figure 10. Cables, IF

SECTION II

TM 11-5820-863-23P-1/EE150-DV-PLG-010/E110 FRC170,171,173/TO 31R5-2FRC171-4

(1) ILLUSTRATION		(2)	(3)	(4)	(5)	(6)	(7)	(8)
(a) FIG NO.	(b) ITEM NO.	SMR CODE	NATIONAL STOCK NUMBER	FSCM	PART NUMBER	DESCRIPTION  USABLE ON CODE	U/M	QTY INC IN UNIT
						GROUP 0211 CABLES. IF		
10	1	XADZZ		11982	511546-6	CABLE ASSY, RF.....	EA	1
10	2	PAFFF	5995-01-149-2173	11982	511546-4	CABLE ASSEMBLY, RADI ..... DYX,DY1,DY2,DY3,DY6,DY8,DZA	EA	1
10	3	XADZZ		11982	511546-5	CABLE ASSY, RF.....	EA	1
10	4	XADZZ		11982	511546-2	CABLE ASSY, RF.....	EA	1
10	5	PAFFF	5995-01-147-9229	11982	511546-1	CABLE ASSEMBLY, RADI ..... DYX,DY1,DY2,DY3,DY6,DY8,DZA	EA	1
10	6	XADZZ		11982	511546-3	CABLE ASSY, RF.....	EA	1
					<b>29</b>			



EL8CX021

Figure 11 . Cable Assemblies, RF, Interconnection



SECTION II

TM 11-5820-863-23P-1/EE150-DV-PLG-010/E110 FRC170,171,173/TO 31R5-2FRC171-4

(1) ILLUSTRATION		(2)	(3)	(4)	(5)	(6)	(7)	(8)
(a) FIG NO.	(b) ITEM NO.	SMR CODE	NATIONAL STOCK NUMBER	FSCM	PART NUMBER	DESCRIPTION  USABLE ON CODE	U/M	QTY INC IN UNIT
						GROUP 05 CABLE ASSEMBLIES, RF, INTERCONNECTION		
11	1	PAFFF	5995-01-141-3916	11982	511123-5	CABLE, ASSEMBLY, SPEC ..... DYX,DY1,DY2,DY3,DY6,DY8,DZA	EA	1
11	2	PAFFF	5995-01-141-3914	11982	511122-5	CABLE, ASSEMBLY, SPEC ..... DYX,DY1,DY2,DY3,DY6,DY8,DZA	EA	1
11	3	PAFFF	5995-01-141-3913	11982	511122-6	CABLE, ASSEMBLY, SPEC ..... DYX,DY1,DY2,DY3,DY6,DY8,DZA	EA	1
11	4	PAFFF	5995-01-141-3915	11982	511123-6	CABLE, ASSEMBLY, SPEC ..... DYX,DY1,DY2,DY3,DY6,DY8,DZA	EA	1
11	5	PAFZZ	5995-01-147-9231	11982	511120-2	CABLE, ASSEMBLY, RADI ..... DYX,DY1,DY2,DY3,DY6,DY8,DZA	EA	1
11	6	PAFZZ	5995-01-147-9232	11982	511120-3	CABLE, ASSEMBLY, RADI ..... DYX,DY1,DY2,DY3,DY6,DY8,DZA	EA	1
11	7	PAFZZ	5995-01-149-2205	11982	511120-1	CABLE, ASSEMBLY, RADI ..... DYX,DY1,DY2,DY3,DY6,DY8,DZA	EA	1
11	8	PAFFF	5995-01-131-4109	11982	511121-3	CABLE, ASSEMBLY, SPEC ..... DYX,DY1,DY2,DY3,DY6,DY8,DZA	EA	1
11	9	PAFFF	5995-01-149-2170	11982	511126-2	CABLE, ASSEMBLY, SPEC ..... DYX,DY1,DY2,DY3,DY6,DY8,DZA	EA	1
11	10	PAFFF	5995-01-149-2171	11982	511126-3	CABLE, ASSEMBLY, SPEC ..... DYX,DY1,DY2,DY3,DY6,DY8,DZA	EA	1
11	11	PAFFF	5995-01-149-2172	11982	511126-4	CABLE, ASSEMBLY, SPEC ..... DYX,DY1,DY2,DY3,DY6,DY8,DZA	EA	1
11	12	PAFFF	5995-01-149-2169	11982	511126-1	CABLE, ASSEMBLY, SPEC ..... DYX,DY1,DY2,DY3,DY6,DY8,DZA	EA	1
11	13	PAFFF	5995-01-131-4110	11982	511121-4	CABLE, ASSEMBLY, SPEC ..... DYX,DY1,DY2,DY3,DY6,DY8,DZA	EA	1
11	14	PAFZZ	5995-01-149-0191	11982	511120-4	CABLE, ASSEMBLY, RADI ..... DYX,DY1,DY2,DY3,DY6,DY8,DZA	EA	1
11	15	PAFZZ	5995-01-148-3573	11982	511120-6	CABLE, ASSEMBLY, RADI ..... DYX,DY1,DY2,DY3,DY6,DY8,DZA	EA	1
11	16	PAFZZ	5995-01-147-9233	11982	511120-5	CABLE, ASSEMBLY, RADI ..... DYX,DY1,DY2,DY3,DY6,DY8,DZA	EA	1
<b>31</b>								

**CROSS- REFERENCE-INDEXES  
NATIONAL STOCK NUMBER INDEX**

**NOTE: LATEST NATIONAL STOCK NUMBER AND PART NUMBER ASSIGNMENTS**

<b>STOCK NUMBER</b>	<b>FIG.</b>	<b>ITEM</b>	<b>STOCK NUMBER</b>	<b>FIG.</b>	<b>ITEM</b>
5935-00-009-3157	1	22	5895-01-110-9627	3	5
6240-00-045-4588	1	10	5895-01-110-9628	3	5
5305-00-054-5652	9	8	5895-01-110-9629	3	5
5305-00-054-6653	2	1	5895-01-110-9630	3	5
5305-00-054-6654	8	1	5895-01-110-9631	3	5
5305-00-054-6656	9	14	5895-01-110-9632	3	5
5305-00-054-6670	2	7	5895-01-110-9633	3	5
5305-60-054-6609	2	6	5895-01-110-9634	3	5
5305-00-054-6670	8	18	5895-01-110-9635	3	5
5305-00-054-6671	9	11	5895-01-110-9636	3	5
5310-00-057-0573	9	7	5895-01-110-9637	3	5
5310-00-069-5291	1	15	5895-01-110-9638	3	5
5310-00-069-5291	8	15	5895-01-110-9639	3	5
5310-00-069-5291	9	10	5895-01-110-9640	3	5
5305-00-088-9665	9	1	5895-01-110-9641	3	5
5999-00-112-1500	9	2	5895-01-110-9642	3	5
5935-00-172-1008	1	24	5895-01-110-9644	3	5
5920-00-177-2148	1	9	5895-01-110-9645	3	5
5305-00-273-4022	1	14	5895-01-110-9646	3	5
5920-00-403-2670	7	3	5895-01-110-9647	3	5
5935-00-410-0194	1	26	5895-01-110-9648	3	5
5305-00-411-0683	2	12	5895-01-110-9649	3	5
5935-00-451-0824	1	19	5895-01-110-9650	3	5
5935-06-496-7838	1	27	5895-01-110-9651	3	5
5305-00-519-6590	8	13	5895-01-110-9652	3	5
5935-00-528-9302	1	25	5895-01-110-9653	3	5
5310-00-550-5054	1	3	5895-01-110-9654	3	5
5310-00-550-5054	1	6	5895-01-110-9655	3	5
5355-00-571-6390	8	16	5895-01-110-9656	3	5
5301-00-616-8660	9	15	5895-01-110-9658	3	5
5935-00-622-2723	1	28	5895-01-110-9665	4	1
5935-00-728-6769	1	20	5895-01-110-9666	4	1
5310-00-713-7624	8	3	5895-01-111-0040	4	1
5310-00-713-7624	9	17	5895-01-111-0042	4	1
5305-00-808-7832	2	15	5895-01-111-0043	4	1
5310-00-820-6653	1	2	5895-01-111-0044	4	1
5310-00-820-6653	1	5	5895-01-111-0045	4	1
5920-00-849-6476	1	8	5895-01-111-0046	4	1
5310-00-880-5975	8	20	5895-01-111-0047	4	1
5310-00-880-5978	2	4	5895-01-111-0048	4	1
5310-00-929-6395	2	3	5895-01-111-0049	4	1
5310-00-929-6395	2	9	5895-01-111-0050	4	1
5310-00-929-6395	8	2	5895-01-111-0051	4	1
5310-00-929-6395	9	16	5895-01-111-0052	4	1
5310-00-933-8118	9	6	5895-01-111-0053	4	1
5310-00-933-8119	1	16	5895-01-111-0054	4	1
5310-00-933-8119	2	5	5895-01-111-0055	4	1
5310-00-933-8119	2	20	5895-01-111-0056	4	1
5310-00-933-8119	8	14	5895-01-111-0057	4	1
5310-00-933-8119	8	19	5895-01-111-0058	4	1
5310-00-933-8119	9	9	5895-01-111-0059	4	1
5310-00-934-9759	2	21	5895-01-111-0060	4	1
5310-00-934-9761	2	10	5895-01-111-0061	4	1
5310-00-973-8660	2	2	5895-01-111-0062	4	1
5310-00-973-8860	2	8	5895-01-111-0064	4	1
5935-01-010-6222	1	21	5895-01-111-0065	4	1
5935-01-012-4000	1	23	5895-01-111-0066	4	1
5961-01-029-4558	2	19	5895-01-111-0067	4	1
5985-01-046-9369	1	17	5895-01-111-0068	4	1
5305-01-052-3304	2	13	5895-01-111-0069	4	1
6240-01-071-4038	7	2	5995-01-111-0070	4	1
4140-01-101-2422	2	17	5895-01-111-0071	4	1
4140-01-101-2422	9	13	5895-01-111-0073	4	1
5960-01-106-7904	6	1	5895-01-111-0074	4	1
6625-01-110-9566	8	11	5895-01-111-0075	4	1
6625-01-110-9567	8	10	5895-01-111-0076	4	1
6625-01-110-9568	8	9	5895-01-111-0077	4	1
5895-01-110-9596	1	11	5895-01-111-0078	4	1
5895-01-110-9597	7	4	5895-01-111-0079	4	1
5821-01-110-9610	8	12	5895-01-111-0080	4	1
5895-01-110-9617	3	5	5895-01-111-0081	4	1
5895-01-110-9618	3	5	5895-01-111-0083	4	1
5895-01-110-9619	3	5	5895-01-111-0084	4	1
5895-01-110-9620	3	5	5895-01-111-0086	4	1
5895-01-110-9621	3	5	5695-01-111-3974	4	1
5895-01-110-9822	3	5	5815-01-119-9115	8	7
5895-01-110-9623	3	5	5815-01-119-9025	8	7
5895-01-110-9024	3	5	5815-01-119-9626	8	7
5895-01-110-9025	3	5	5815-01-119-9627	8	7
5895-01-110-9026	3	5	5820-01-120-3351	2	22

CROSS- REFERENCE-INDEXES  
NATIONAL STOCK NUMBER INDEX

**NOTE: LATEST NATIONAL STOCK NUMBER AND PART NUMBER ASSIGNMENTS**

STOCK NUMBER	FIG.	ITEM	STOCK NUMBER	FIG.	ITEM
7025-01-120-7910	8	8	5985-01-131-4281	5	4
7025-01-120-7911	8	8	5985-01-131-4282	5	4
7025-01-120-7913	8	8	5985-01-131-4283	5	4
5820-01-120-8615	8	4	5985-01-131-4284	5	4
6625-01-121-1470	8	17	5985-01-131-4285	5	4
5820-01-121-1914	8	5	5985-01-131-4286	5	4
5820-01-121-1916	8	5	5985-01-131-4287	5	4
5820-01-121-1917	8	5	5985-01-131-4288	5	4
5820-01-121-1943	8	7	5985-01-131-4289	5	4
5820-01-121-1944	8	7	5985-01-131-4290	5	4
7025-01-121-1956	8	8	5985-01-131-4291	5	4
5820-01-121-1916	8	2	5985-01-131-4292	5	4
5820-01-121-1916	8	2	5985-01-131-4293	5	4
5820-01-126-9516	5	2	5985-01-131-4294	5	4
5820-01-126-9516	5	2	5985-01-131-4295	5	4
5820-01-126-9516	5	2	5985-01-131-4296	5	4
5820-01-126-9516	5	2	5985-01-131-4298	5	4
5820-01-126-9516	5	2	5985-01-131-4299	5	4
5820-01-126-9516	5	2	5985-01-131-4300	5	4
5820-01-126-9516	5	2	5985-01-131-4301	5	4
5820-01-126-9516	5	2	5985-01-131-4302	5	4
5820-01-126-9516	5	2	5985-01-131-4303	5	4
5820-01-126-9516	5	2	5985-01-131-4304	5	4
5820-01-126-9516	5	2	5985-01-131-4305	5	4
5820-01-126-9516	5	2	5985-01-131-4306	5	4
5820-01-126-9516	5	2	5985-01-131-4307	5	4
5820-01-126-9516	5	2	5985-01-131-4308	5	4
5820-01-126-9516	5	2	5985-01-131-4309	5	4
5820-01-126-9516	5	2	5985-01-131-4310	5	4
5820-01-126-9516	5	2	5985-01-131-4311	5	4
5820-01-126-9516	5	2	5985-01-131-4312	5	4
5820-01-126-9516	5	2	5985-01-131-4313	5	4
5820-01-126-9516	5	2	5985-01-131-4314	5	4
5820-01-126-9516	5	2	5985-01-131-4315	5	4
5820-01-126-9516	5	2	5985-01-131-4316	5	4
5820-01-126-9516	5	2	5985-01-131-4317	5	4
5820-01-126-9516	5	2	5985-01-131-4318	5	4
5820-01-126-9516	5	2	5985-01-131-4319	5	4
5820-01-126-9516	5	2	5985-01-132-7016	5	4
5820-01-126-9516	5	2	5985-01-137-9802	5	4
5820-01-126-9516	5	2	5895-01-139-0339	4	1
5820-01-126-9516	5	2	5985-01-140-2668	5	4
5820-01-126-9516	5	2	5895-01-141-3809	4	1
5820-01-126-9516	5	2	5895-01-141-3810	4	1
5820-01-126-9516	5	2	5995-01-141-3913	11	3
5820-01-126-9516	5	2	5995-01-141-3914	11	2
5820-01-126-9516	5	2	5995-01-141-3915	11	4
5820-01-126-9516	5	2	5995-01-141-3916	11	1
5820-01-126-9516	5	2	5895-01-142-3440	3	5
5820-01-126-9516	5	2	5895-01-145-5195	3	5
5820-01-126-9516	5	2	5995-01-147-8452	3	2
5820-01-126-9516	5	2	5995-01-147-8453	5	3
5820-01-126-9516	5	2	5995-01-147-8454	3	1
5820-01-126-9516	5	2	5995-01-147-8456	4	3
5820-01-126-9516	5	2	5995-01-147-8457	5	5
5820-01-126-9516	5	2	5995-01-147-8458	5	1
5820-01-126-9516	5	2	5995-01-147-8509	3	4
5820-01-126-9516	5	2	5995-01-147-8511	3	3
5820-01-126-9744	1	1	5995-01-147-8512	4	2
5895-01-128-1800	3	5	5995-01-147-9229	10	5
5895-01-128-1801	4	1	5995-01-147-9231	11	5
7025-01-130-4927	8	8	5995-01-147-9232	11	6
5995-01-131-4109	11	8	5995-01-147-9233	11	16
5995-01-131-4110	11	13	5995-01-148-3573	11	15
5895-01-131-4179	3	5	5995-01-149-0191	11	14
5895-01-131-4219	4	1	5995-01-149-2169	11	12
5895-01-131-4220	4	1	5995-01-149-2170	11	9
5985-01-131-4275	5	4	5995-01-149-2171	11	10
5985-01-131-4276	5	4	5995-01-149-2172	11	11
5985-01-131-4277	5	4	5995-01-149-2173	10	2
5985-01-131-4278	5	4	5995-01-149-2205	11	7
5985-01-131-4279	5	4	5920-01-150-6362	7	1
5985-01-131-4280	5	4	5895-01-152-5846	4	1

FSCM	PART NUMBER	FIGURE NO.	ITEM NO.	FSCM	PART NUMBER	FIGURE NO.	ITEM NO.
71744	CM3-673	7	2	80058	CY7857/FRC171(V)	2	22
80058	CY7852FRC	8	4	21847	C11380-1	3	5

## SECTION IV

TM 11-5820-863-23P-1/EE150-DV-PLG-010/E110 FRC170,171,173/TO 31R5-2FRC171-4  
NATIONAL STOCK NUMBER AND PART NUMBER INDEX

FSCM	PART NUMBER	FIGURE NO.	ITEM NO.	FSCM	PART NUMBER	FIGURE NO.	ITEM NO.
11982	C511308-1	6	1	11982	C511380-140	3	5
11982	C511310	1	13	11982	C511380-141	3	5
11982	C511330-164	5	4	11982	C511380-142	3	5
11982	C511334-1	5	2	11982	C511380-143	3	5
11982	C511334-1	5	2	11982	C511380-144	3	5
11982	C511334-1	5	2	11982	C511380-145	3	5
11982	C511334-1	5	2	11982	C511360-147	3	5
11982	C511334-1	5	2	11982	C511380-148	3	5
11982	C511334-1	5	2	11982	C511380-149	3	5
11982	C511334-1	5	2	11982	C511380-150	3	5
11982	C511334-1	5	2	11982	C511380-151	3	5
11982	C511334-1	5	2	11982	C511380-244	3	5
11982	C511334-1	5	2	11982	C511380-245	3	5
11982	C511334-1	5	2	11982	C511410-1	4	1
11982	C511334-1	5	2	11982	C511410-102	4	1
11982	C511334-1	5	2	11982	C511410-103	4	1
11982	C511334-1	5	2	11982	C511410-104	4	1
11982	C511334-1	5	2	11982	C511410-105	4	1
11982	C511334-1	5	2	11982	C511410-106	4	1
11982	C511334-1	5	2	11982	C511410-107	4	1
11982	C511334-1	5	2	11982	C511410-108	4	1
11982	C511334-1	5	2	11982	C511410-109	4	1
11982	C511334-1	5	2	11982	C511410-110	4	1
11982	C511334-1	5	2	11982	C511410-111	4	1
11982	C511334-1	5	2	11982	C511410-112	4	1
11982	C511334-1	5	2	11982	C511410-113	4	1
11982	C511334-1	5	2	11982	C511410-114	4	1
11982	C511334-1	5	2	11982	C511410-115	4	1
11982	C511334-1	5	2	11982	C511410-116	4	1
11982	C511334-1	5	2	11982	C511410-117	4	1
11982	C511334-1	5	2	11982	C511410-118	4	1
11982	C511334-1	5	2	11982	C511410-120	4	1
11982	C511334-1	5	2	11982	C511410-121	4	1
11982	C511334-1	5	2	11982	C511410-123	4	1
11982	C511334-1	5	2	11982	C511410-124	4	1
11982	C511334-1	5	2	11982	C511410-125	4	1
11982	C511334-1	5	2	11982	C511410-126	4	1
11982	C511334-1	5	2	11982	C511410-127	4	1
11982	C511334-1	5	2	11982	C511410-128	4	1
11982	C511334-1	5	2	11982	C511410-129	4	1
11982	C511334-1	5	2	11982	C511410-130	4	1
11982	C511334-1	5	2	11982	C511410-132	4	1
11982	C511334-1	5	2	11982	C511410-133	4	1
11982	C511334-1	5	2	11982	C511410-134	4	1
11982	C511334-1	5	2	11982	C511410-135	4	1
11982	C511L34-1	5	2	11982	C511410-136	4	1
11982	C511334-1	5	2	11982	C511410-137	4	1
11982	C511334-1	5	2	11982	C511410-138	4	1
11982	C511334-1	5	2	11982	C511410-139	4	1
11982	C511334-1	5	2	11982	C511410-140	4	1
11982	C511380-102	3	5	11982	C511410-141	4	1
11982	C511380-105	3	5	11982	C511410-3	4	1
11982	C511380-106	3	5	11982	C511410-302	4	1
11982	C511380-107	3	5	11982	C511410-303	4	1
11982	C511380-108	3	5	11982	C511410-305	4	1
11982	C511380-109	3	5	11982	C511410-307	4	1
11962	C511380-110	3	5	11982	C511410-308	4	1
11982	C511380-111	3	5	11982	C511410-309	4	1
11982	C511380-112	3	5	11982	C511410-310	4	1
11982	C511380-113	3	5	11982	C511410-315	4	1
11982	C511380-114	3	5	11982	C511410-316	4	1
11982	C511380-115	3	5	11982	C511410-4	4	1
11982	C511380-118	3	5	11982	C511410-402	4	1
11982	C511380-119	3	5	81349	F03B250V1AS	1	8
11982	C511380-120	3	5	80058	F1499FRC	8	5
11982	C511380-121	3	5	80058	F1501FRC	8	5
11982	C511380-122	3	5	80058	F1502FRC	8	5
11982	C511380-123	3	5	71400	GMA2	7	3
11982	C511380-125	3	5	80058	ID-2230/FRC	8	10
11982	C511380-127	3	5	71400	MDA15A	1	9
11982	C511380-128	3	5	80058	MD1081FRC	8	7
11982	C511380-130	3	5	80058	MD1083FRC	8	7
11982	C511380-131	3	5	80058	MD1084FRC	8	7
11982	C511380-133	3	5	80058	MD1087FRC	8	7
11982	C511380-134	3	5	80058	MD1089FRC	8	7
11982	C511380-135	3	5	80058	MD1091FRC	8	7
11982	C511380-136	3	5	04713	MR752	2	19
11982	C511380-137	3	5	96906	NS15795-807	2	4
11982	C511380-138	3	5	96906	NS15795-809	1	3
11982	C511380-139	3	5	96906	NS15795-809	1	6

## SECTION IV

TM 11-5820-863-23P-1/EE150-DV-PLG-010/E110 FRC170,171,173/TP 31R5-2FRC171-4  
 NATIONAL STOCK NUMBER AND PART NUMBER INDEX

FSCM	PART NUMBER	FIGURE NO.	ITEM NO.	FSCM	PART NUMBER	FIGURE NO.	ITEM NO.
96906	MS18235-3CN	1	10	11982	511122-6	11	3
96906	MS24693-25	2	13	11982	511123-5	11	1
96906	MS24693C29	9	1	11982	511123-6	11	4
96906	MS24693S29	2	15	11982	511126-1	11	12
96906	MS3417-14N	1	28	11982	511126-2	11	9
96906	MS3417-16N	1	25	11982	511126-3	11	10
96906	MS3417-20N	1	23	11982	511126-4	11	11
96906	MS3417-22N	1	21	11982	511130		
96906	MS3476L14-19S	1	27	11982	511200	1	12
96906	MS3476L14-5S	1	26	21847	511319	4	3
96906	MS3476L16-26S	1	24	21847	511320	3	2
96906	MS3476L20-41S	1	22	21847	511321	5	3
96906	MS3476L22-55S	1	20	21847	511322	3	1
96906	MA35338-135	9	6	21847	511323	5	5
96906	MA35338-136	2	3	21847	511324	3	4
96906	MS35338-136	2	9	21847	511327	3	3
96906	MS35338-136	8	2	21847	511328	4	2
96906	MS35338-136	9	16	21847	511330-1	5	4
96906	MS35338-137	1	16	21847	511330-102	5	4
96906	MS35338-137	2	5	21847	511330-103	5	4
96906	MS35338-137	2	20	21847	511330-104	5	4
96906	MS35338-137	8	14	21847	511330-106	5	4
96906	MS35338-137	8	19	21847	511330-107	5	4
96906	MS35338-137	9	9	21847	511330-109	5	4
96906	MS35338-50	1	2	21847	511330-110	5	4
96906	MS35338-50	1	5	21847	511330-111	5	4
96906	MS35649-264	2	10	21847	511330-112	5	4
96906	MS35649-284	2	21	21847	511330-113	5	4
96906	MS51957-123	2	12	21847	511330-114	5	4
96906	MS51957-126	8	13	21847	511330-115	5	4
96906	MS51957-18	9	8	21847	511330-118	5	4
96906	MS51957-29	2	1	21847	511330-119	5	4
96906	MS51957-30	8	1	21847	511335-120	5	4
96906	MS51957-32	9	14	21847	511330-121	5	4
96906	MS51957-33	2	7	21847	511330-122	5	4
96906	MS51957-44	2	6	21847	511330-123	5	4
96906	MS51957-45	8	18	21847	511330-125	5	4
96906	MS51957-46	9	11	21847	511330-127	5	4
94906	MS91528-2F2B	8	16	21847	511330-128	5	4
80058	MT6124FRC	1	1	21847	511330-130	5	4
81349	M3922/52-041	1	17	21847	511330-131	5	4
80205	NAS1352C08-7	1	14	21847	511330-132	5	4
80205	NAS620C8	1	15	21847	511330-133	5	4
80205	NAS620C8	8	15	21847	511330-134	5	4
80205	NAS620C8	9	10	21847	511330-135	5	4
80058	PP-7608/FRC	7	4	21847	511330-136	5	4
80058	PP7611FRC	1	11	21847	511330-137	5	4
08226	REW620-6	8	3	21847	511330-138	5	4
08226	PEW620-6	9	17	21847	511330-139	5	4
81349	REW620CBL	8	20	21847	511330-140	5	4
80058	SA2296FRC	8	11	21847	511330-141	5	4
80063	SM-B-416109-1	2	2	21847	511330-142	5	4
80063	SM-B-416109-1	2	8	21847	511330-143	5	4
80058	TD1304FRC	8	12	21847	511330-144	5	4
80058	TD1305FRC	8	9	21847	511330-145	5	4
80058	TD1310FRC	8	8	21847	511330-146	5	4
80058	TD1311FRC	8	8	21847	511330-147	5	4
80058	TD1312FRC	8	8	21847	511330-148	5	4
80058	TD1314FRC	8	8	21847	511333-149	5	4
80058	TD1315FRC	8	8	21847	511330-150	5	4
80058	TS-3855/FRC	8	17	21847	511330-151	5	4
78189	12-24	1	4	21847	511330-152	5	4
78189	12-24	1	7	21847	511330-166	5	4
75915	211005	7	1	21847	511332	5	1
00779	332225	1	19	21847	511351	2	14
23936	4148X	2	17	21847	511359-1	2	11
23936	4148x	9	13	21847	511359-2	2	16
11982	509971-3	9	3	21847	511410-142	4	1
11982	511120-1	11	7	21847	511410-211	4	1
11982	511120-2	11	5	11982	511546-1	10	5
11982	511120-3	11	6	11982	511546-4	10	2
11982	511120-4	11	14	82877	55048	2	18
11982	511120-5	11	16	82877	550481	9	12
11982	511120-6	11	15	07700	60-70207	9	2
11982	511121-3	11	8	06540	8159A0440	9	4
11982	511121-4	11	13	18876	9052346	9	15
11952	511122-5	11	2	88769	91921002	9	7

**SECTION IV**

**TM 11-5820-863-23P-1/EE150-DV-PLG-010/E110 FRC170,171,173/TP 31R5-2FRC171-4  
NATIONAL STOCK NUMBER AND PART NUMBER INDEX**

**LATEST PART NUMBER ASSIGNMENTS**

<b>FSCM</b>	<b>PART NUMBER</b>	<b>FIGURE NO.</b>	<b>ITEM NO.</b>
28817	23-12001786	1	18
11982	511546-2	10	4
11982	511546-3	10	6
11982	511546-5	10	3
11982	511546-6	10	1

By Order of the Secretary of the Army:

Official:

JOHN A. WICKHAM JR.  
*General, United States Army*  
*Chief of Staff*

DONALD J. DELANDRO  
Brigadier General, United States Army  
The Adjutant General

TM 11-5820-863-23P-1

DISTRIBUTION:

To be distributed in accordance with DA Form 12-51A,  
Organizational Maintenance requirements for AN/FRC-171(V).

RECOMMENDED CHANGES TO EQUIPMENT TECHNICAL PUBLICATIONS



THEN... JOT DOWN THE DOPE ABOUT IT ON THIS FORM, CAREFULLY TEAR IT OUT, FOLD IT AND DROP IT IN THE MAIL!

**SOMETHING WRONG WITH THIS PUBLICATION?**

FROM: (PRINT YOUR UNIT'S COMPLETE ADDRESS)

DATE SENT

PUBLICATION NUMBER

TM 11-5825-270-10

PUBLICATION DATE

23 Jul 81

PUBLICATION TITLE

Radio Frequency R-2176/FRN

BE EXACT... PIN-POINT WHERE IT IS

PAGE NO.

PARA-GRAPH

FIGURE NO.

TABLE NO.

IN THIS SPACE TELL WHAT IS WRONG AND WHAT SHOULD BE DONE ABOUT IT:

TEAR ALONG PERFORATED LINE

PRINTED NAME, GRADE OR TITLE, AND TELEPHONE NUMBER

SIGN HERE:

DA FORM 2028-2  
1 JUL 79

PREVIOUS EDITIONS ARE OBSOLETE.

P.S.—IF YOUR OUTFIT WANTS TO KNOW ABOUT YOUR RECOMMENDATION MAKE A CARBON COPY OF THIS AND GIVE IT TO YOUR HEADQUARTERS.



